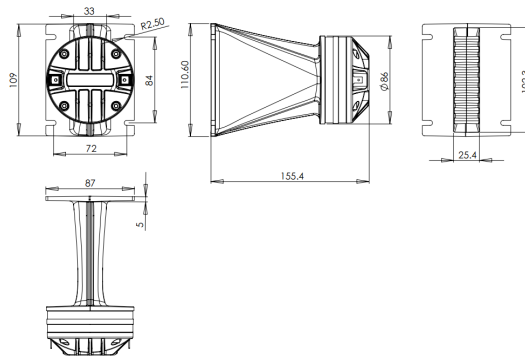


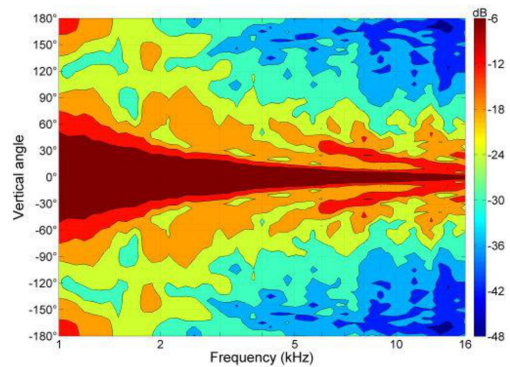
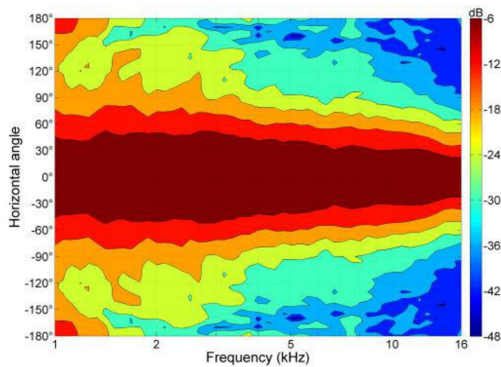
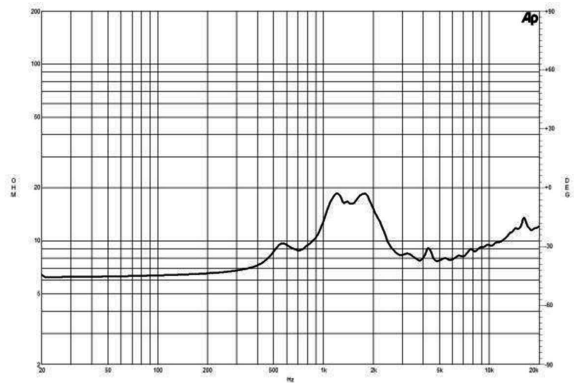
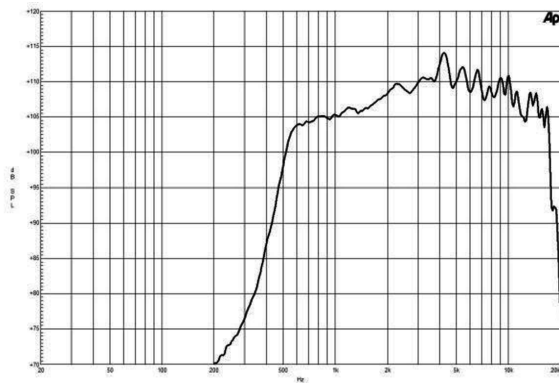
# WG400

**8Ω****Horn/Driver Combinations - 1.0 Inches**

- Line Array optimized Waveguide with DE400 driver
- 140° max horizontal coverage
- 100 W continuous program power capacity
- 44 mm (1.7 in) aluminium voice coil
- Polyimide diaphragm
- 1200 - 18000 Hz response
- 108.5 dB sensitivity
- Compact Neodymium magnet assembly

# WG400

Horn/Driver Combinations- 1.0 Inches



## SPECIFICATIONS

Nominal Impedance	8 $\Omega$
Horizontal Coverage	140 ° Max
Active Radiating Factor	92.5 %
Waveguide Material	Cast Aluminium

## SPECIFICATIONS HF UNIT

Minimum Impedance	7.7 $\Omega$
Nominal Power Handling <sup>1</sup>	50 W
Continuous power handling <sup>2</sup>	100 W
Sensitivity (1W/1m) <sup>3</sup>	108.5 dB
Frequency Range <sup>4</sup>	1.2 - 18.0 kHz
Voice Coil Diameter	44 mm (1.7 in)
Flux Density	1.8 T
Recommended Crossover <sup>5</sup>	1.5 kHz
Winding Material	Aluminium
Diaphragm Material	Polyimide
Magnet Material	Neodymium Ring

## MOUNTING AND SHIPPING INFO

Exit Size	102x25 mm (4x1 in)
Driver Diameter	86 mm (3.3 in)
Dimensions	111x87x155 mm (4.4x3.5x6.1 in)
Net Weight	1.98 kg (4.35 lb)
Shipping Units	1
Shipping Weight	2.13 kg (4.68 lb)
Shipping Box	175x115x90 mm (6.89x4.53x3.54 in)

- 2 hour test made with continuous pink noise signal (6 dB crest factor) within the range from the recommended crossover frequency to 20 kHz. Power calculated on rated minimum impedance.
- Power on Continuous Program is defined as 3 dB greater than the Nominal rating.
- Applied RMS Voltage is set to 2.83 V for 8 ohms Nominal Impedance.
- Waveguide mounted on 90°x10° bell horn
- 12 dB/oct. Or higher slope high-pass filter.