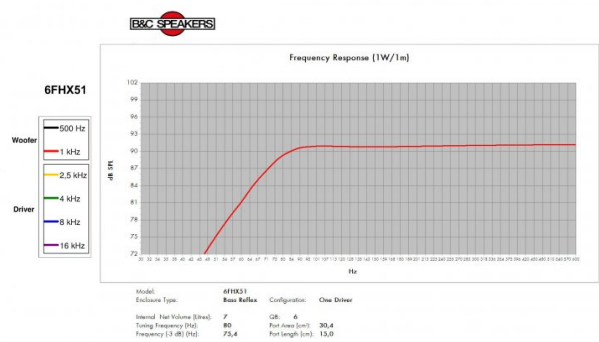
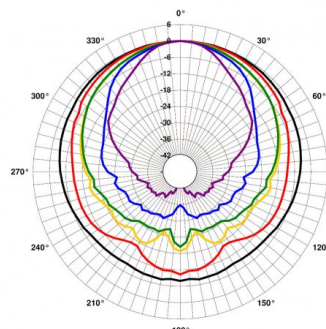
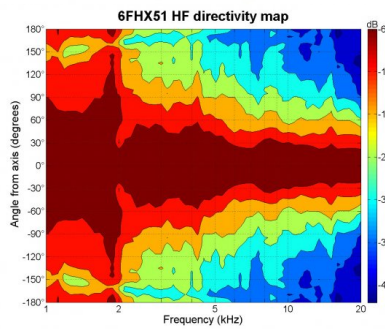
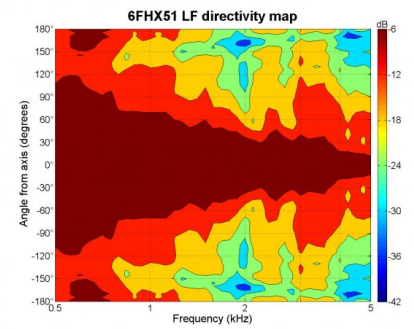
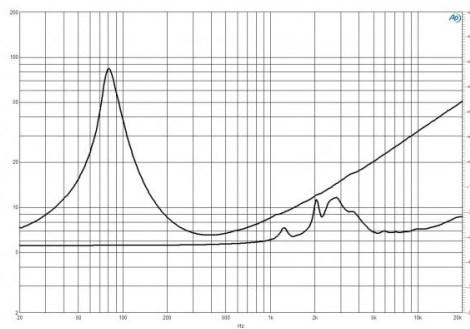
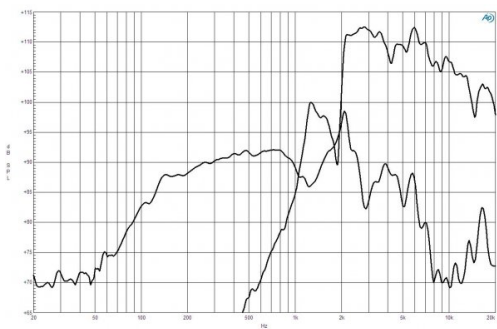




- 300 W continuous program power capacity
- 70° nominal coverage
- 85 - 18000 Hz response
- 93 dB sensitivity
- 20.1 mm (0.79") HF unit exit diameter



## GENERAL

Nominal Diameter	170 mm (6.5 in)
Nominal Impedance	8 Ω
Frequency Range	85 Hz - 18000 Hz
Dispersion Angle	70 ° Included by -6 dB down points.

## DESIGN

Magnet Material	Ferrite (LF) - Neodym. Ring (HF)
Woofer Cone Treatment	WP Waterproof Front Side

## SERVICE KITS

HF replacement-diaphragm	MMDDE58
LF recone-kits	RCK06FHX518

## SPECIFICATIONS LF UNIT

Nominal Diameter	170 mm (6.5 in)
Nominal Impedance	8 Ω
Minimum Impedance	6.5 Ω
Nominal Power Handling	150 W 2 hours test made with continuous pink noise signal within the range Fs-10Fs. Power calculated on rated minimum impedance. Loudspeaker in free air.

Continuous Power Handling	300 W Power on Continuous Program is defined as 3 dB greater than the Nominal rating.
---------------------------	--

Sensitivity	93 dB Applied RMS Voltage is set to 2.83V.
-------------	---

Voice Coil Diameter	51 mm (2 in)
---------------------	--------------

Winding Material	Copper
------------------	--------

Former Material	Kapton
-----------------	--------

Winding Depth	13 mm (0.51 in)
---------------	-----------------

Magnetic Gap Depth	6 mm (0.24 in)
--------------------	----------------

Flux Density	1.05 T
--------------	--------

Woofer Cone Treatment	WP Waterproof Front Side
-----------------------	--------------------------

## PARAMETERS

Fs	85 Hz
Re	5.5 Ω
Qes	0.4
Qms	7.8
Qts	0.37
Vas	5 dm <sup>3</sup> (0.18 ft <sup>3</sup> )
Sd	132 cm <sup>2</sup> (20.5 in <sup>2</sup> )
η0	0.83 %
Xvar	5.7 mm
Mms	16 g
Bl	11.3 Tm
Le	1 mH
EBP	213 Hz

## SPECIFICATIONS HF UNIT

Nominal Diameter	170 mm (6.5 in)
Nominal Impedance	8 Ω
Minimum Impedance	7 Ω
Nominal Power Handling	10 W 2 hour test made with continuous pink noise signal within the range from the recommended crossover frequency to 20 kHz. Power calculated on rated minimum impedance. Loudspeaker in free air.

Continuous Power Handling	20 W Power on Continuous Program is defined as 3 dB greater than the Nominal rating.
---------------------------	---

Sensitivity	108.5 dB Applied RMS Voltage is set to 2.83V.
-------------	--

Recommended Crossover	2.5 kHz 12 dB/oct. or higher slope high-pass filter.
-----------------------	---

Voice Coil Diameter	25 mm (1 in)
---------------------	--------------

Winding Material	Aluminium
------------------	-----------

Inductance	0.1 mH
------------	--------

Flux Density	1.65 T
--------------	--------

Diaphragm Material	Polyester
--------------------	-----------

## MOUNTING AND SHIPPING INFO

Overall Diameter	187 mm (7.4 in)
Bolt Circle Diameter	172 mm (6.7 in)
Baffle Cutout Diameter	146 mm (5.75 in)
Depth	122 mm (4.8 in)
Flange and Gasket Thickness	12 mm (0.47 in)
Net Weight	2.6 kg (5.73 lb)
Shipping Units	1 pcs
Shipping Weight	3.05 kg (6.72 lb)
Shipping Box	255x255x150 mm (10.04x10.04x5.91 in)