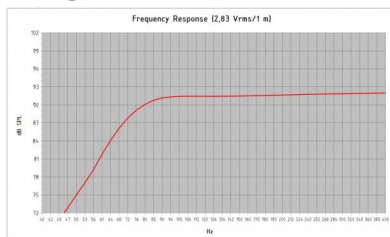
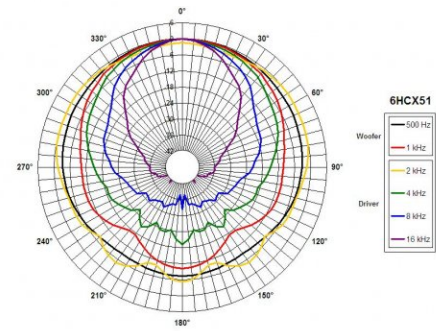
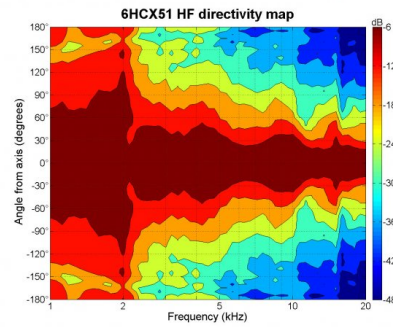
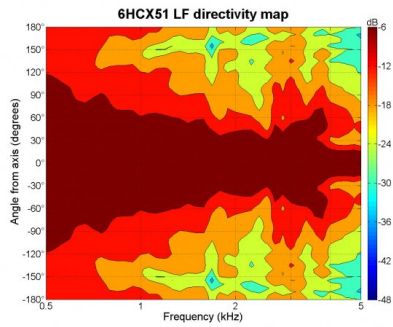
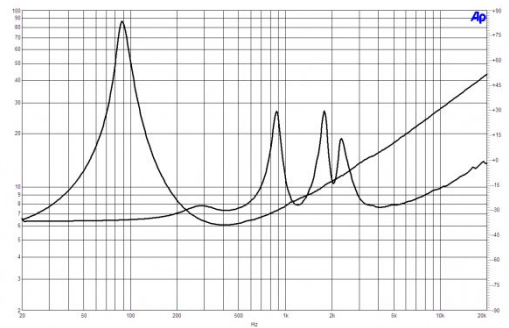
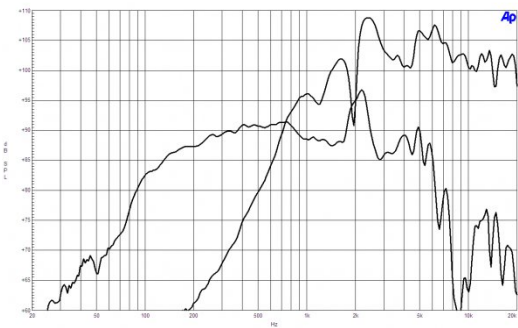


- 300 W continuous program power capacity
- 70° nominal coverage
- 90 - 18000 Hz response
- 92 dB sensitivity
- Single Neodymium magnet assembly
- 20.1 mm (0.79") HF unit exit diameter



Model	6HCX51
Enclosure Type	Basic Profile
Impedance (Nominal)	8 Ω
Power Frequency (Hz)	60
Frequency (1 kHz)	75.0
Extension Limited Maximum SPL at 1 meter (dB)	109.7
Thermal Limited Maximum SPL at 1 meter (dB)	112.7
Flux Area (cm <sup>2</sup> )	36.4
Pinch Length (mm)	15.0
Watts (Base Rated Power Rating)	75.0
Watts (MSD Rated Power Rating)	100.0

**GENERAL**

Nominal Diameter	170 mm (6.5 in)
Nominal Impedance	8 Ω
Frequency Range	90 Hz - 18000 Hz
Dispersion Angle	70 ° Included by -6 dB down points.

**DESIGN**

Magnet Material	Neodymium Ring
Woofer Cone Treatment	TWP Waterproof Both Sides

**SERVICE KITS**

HF replacement-diaphragm	MMD0128
LF recone-kits	RCK06HCX518

**SPECIFICATIONS LF UNIT**

Nominal Diameter	170 mm (6.5 in)
Nominal Impedance	8 Ω
Minimum Impedance	6 Ω
Nominal Power Handling	150 W 2 hours test made with continuous pink noise signal within the range Fs-10Fs. Power calculated on rated minimum impedance. Loudspeaker in free air.

Continuous Power Handling	300 W Power on Continuous Program is defined as 3 dB greater than the Nominal rating.
---------------------------	------------------------------------------------------------------------------------------

Sensitivity	92 dB Applied RMS Voltage is set to 2.83V.
-------------	-----------------------------------------------

Voice Coil Diameter	51 mm (2 in)
---------------------	--------------

Winding Material	Copper
------------------	--------

Former Material	Kapton
-----------------	--------

Winding Depth	13 mm (0.51 in)
---------------	-----------------

Magnetic Gap Depth	6 mm (0.24 in)
--------------------	----------------

Flux Density	1.1 T
--------------	-------

Woofer Cone Treatment	TWP Waterproof Both Sides
-----------------------	---------------------------

**PARAMETERS**

Fs	89 Hz
Re	5.2 Ω
Qes	0.4
Qms	7.5
Qts	0.38
Vas	5 dm <sup>3</sup> (0.18 ft <sup>3</sup> )
Sd	132 cm <sup>2</sup> (20.5 in <sup>2</sup> )
η0	0.8 %
Xvar	5.5 mm
Mms	16 g
Bl	10.9 Tm
Le	0.8 mH
EBP	223 Hz

**SPECIFICATIONS HF UNIT**

Nominal Diameter	170 mm (6.5 in)
Nominal Impedance	8 Ω
Minimum Impedance	7.5 Ω

Nominal Power Handling	25 W 2 hour test made with continuous pink noise signal within the range from the recommended crossover frequency to 20 kHz. Power calculated on rated minimum impedance. Loudspeaker in free air.
------------------------	-------------------------------------------------------------------------------------------------------------------------------------------------------------------------------------------------------

Continuous Power Handling	50 W Power on Continuous Program is defined as 3 dB greater than the Nominal rating.
---------------------------	-----------------------------------------------------------------------------------------

Sensitivity	105 dB Applied RMS Voltage is set to 2.83V.
-------------	------------------------------------------------

Recommended Crossover	2.2 kHz 12 dB/oct. or higher slope high-pass filter.
-----------------------	---------------------------------------------------------

Voice Coil Diameter	36 mm (1.4 in)
---------------------	----------------

Winding Material	Aluminium
------------------	-----------

Inductance	0.06 mH
------------	---------

Flux Density	1.8 T
--------------	-------

Diaphragm Material	Polyester
--------------------	-----------

**MOUNTING AND SHIPPING INFO**

Overall Diameter	187 mm (7.4 in)
Bolt Circle Diameter	172 mm (6.7 in)
Baffle Cutout Diameter	146 mm (5.75 in)
Depth	104 mm (4.1 in)
Flange and Gasket Thickness	11 mm (0.4 in)
Net Weight	1.6 kg (3.53 lb)
Shipping Units	1 pcs
Shipping Weight	2.05 kg (4.52 lb)
Shipping Box	255x255x150 mm (10.04x10.04x5.91 in)