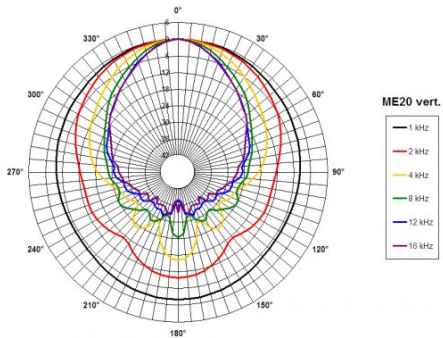
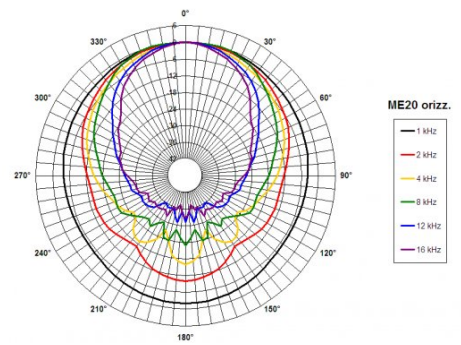
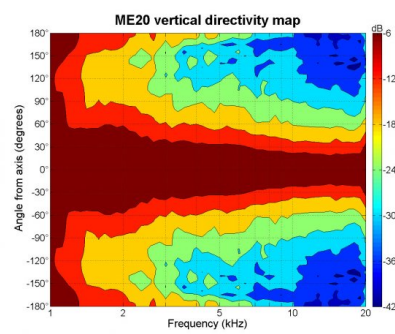
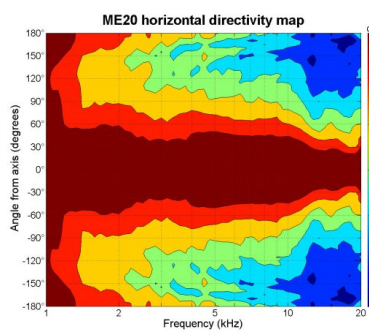


- 1" throat entry
- 90° x 60° nominal coverage
- Exponential flare
- Excellent loading down to 1.5 kHz



### SPECIFICATIONS

Horn mounted on B&C DE 500 compression driver.

Throat Diameter	25 mm (1 in)
Nominal Coverage Horizontal	90 °
Nominal Coverage Vertical	60 °
Cutoff Frequency	1.5 kHz
Material	Cast Aluminium
Dimensions	145x145x90 mm (5.7x5.7x3.6 in)

### MOUNTING AND SHIPPING INFO

Other details	2x 6.3 mm (0.25 in) holes 180° on 76 mm (3 in) diameter --- 2x 5.1 mm (0.2 in) holes 180° on 57 mm (2.24 in) diameter
Baffle Cutout Dimension	118 mm (4.6 in)
Air Volume Occupied by Driver	0.1 dm <sup>3</sup>
Net Weight	0.37 kg (0.81 lb)
Shipping Units	1 pcs
Shipping Weight	0.38 kg (0.83 lb)
Shipping Box	165x165x100 mm (6.50x6.50x3.94 in)