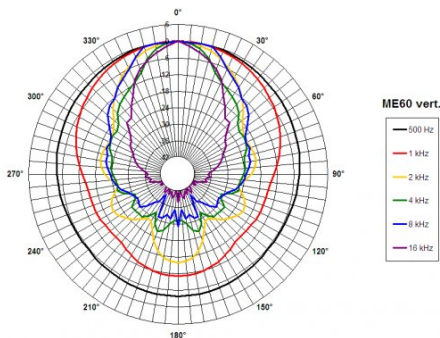
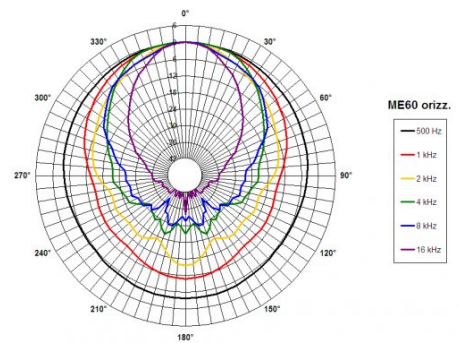
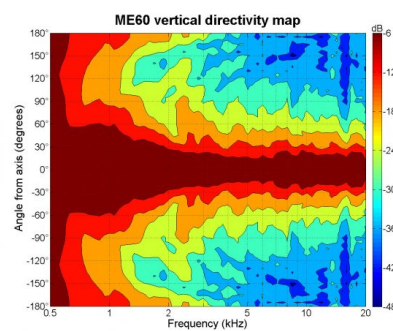
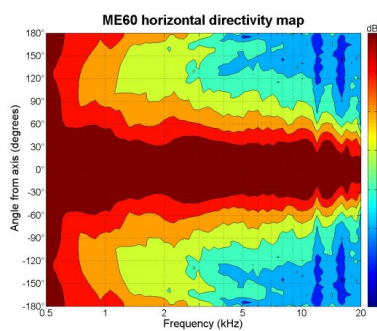


- 2" throat entry
- 60° x 40° nominal coverage
- Constant Directivity
- Excellent loading down to 800 Hz



SPECIFICATIONS

Horn mounted on B&C DE 750 compression driver.

Throat Diameter 50 mm (2 in)

Nominal Coverage Horizontal 60 °

Nominal Coverage Vertical 40 °

Cutoff Frequency 0.8 kHz

Material Cast Aluminium

Dimensions 270x237x202 mm
(10.6x9.3x7.9 in)**MOUNTING AND SHIPPING INFO**Other details 4x 6.5 mm (0.255 in) holes
90° on 102 mm (4 in) diameter

Baffle Cutout Dimension 232 mm (9.1 in)

Air Volume Occupied by Driver 0.45 dm³ (0.02 ft³)

Net Weight 1.69 kg (3.73 lb)

Shipping Units 1 pcs

Shipping Weight 2.29 kg (5.06 lb)

Shipping Box 290x260x260 mm
(11.42x10.24x10.24 in)