

12CXN76 8 Ω

- 700 W continuous program power capacity
- 80° nominal coverage
- 45 - 18000 Hz response
- 99 dB sensitivity
- Single Neodymium magnet assembly
- Aluminium demodulating ring for very low distortion



12CXN76 8 Ω

GENERAL

Nominal Diameter	320 mm (12 in)
Nominal Impedance	8 Ω
Frequency Range	45 Hz - 18000 Hz
Dispersion Angle	80 °
Included by -6 dB down points.	

PARAMETERS

Fs	42 Hz
Re	5 Ω
Qes	0.2
Qms	8
Qts	0.19
Vas	120 dm³ (4.2 ft³)
Sd	522 cm² (80.9 in²)
η0	4.1 %
Xvar	6 mm
Mms	47 g
Bl	17.6 Tm
Le	0.8 mH
EBP	210 Hz

SPECIFICATIONS HF UNIT

Nominal Diameter	320 mm (12 in)
Nominal Impedance	8 Ω
Minimum Impedance	8 Ω
Nominal Power Handling	80 W
2 hour test made with continuous pink noise signal within the range from the recommended crossover frequency to 20 kHz. Power calculated on rated minimum impedance. Loudspeaker in free air.	
Continuous Power Handling	160 W
Power on Continuous Program is defined as 3 dB greater than the Nominal rating.	
Sensitivity	105 dB
Applied RMS Voltage is set to 2.83V.	
Recommended Crossover	1.2 kHz
12 dB/oct. or higher slope high-pass filter.	
Voice Coil Diameter	75 mm (3 in)
Winding Material	Aluminium
Inductance	0.14 mH
Flux Density	1.9 T
Diaphragm Material	Polyester/Titanium

SPECIFICATIONS LF UNIT

Nominal Diameter	320 mm (12 in)
Nominal Impedance	8 Ω
Minimum Impedance	6.5 Ω
Nominal Power Handling	350 W
2 hours test made with continuous pink noise signal within the range Fs-10Fs. Power calculated on rated minimum impedance. Loudspeaker in free air.	
Continuous Power Handling	700 W
Power on Continuous Program is defined as 3 dB greater than the Nominal rating.	
Sensitivity	99 dB
Applied RMS Voltage is set to 2.83V.	
Voice Coil Diameter	76 mm (3 in)
Winding Material	Copper
Former Material	Glass Fibre
Winding Depth	16.2 mm (0.64 in)
Magnetic Gap Depth	8 mm (0.31 in)
Flux Density	1.15 T
Woofer Cone Treatment	WP Waterproof Front Side

DESIGN

Magnet Material	Neodymium Ring
Woofer Cone Treatment	WP Waterproof Front Side

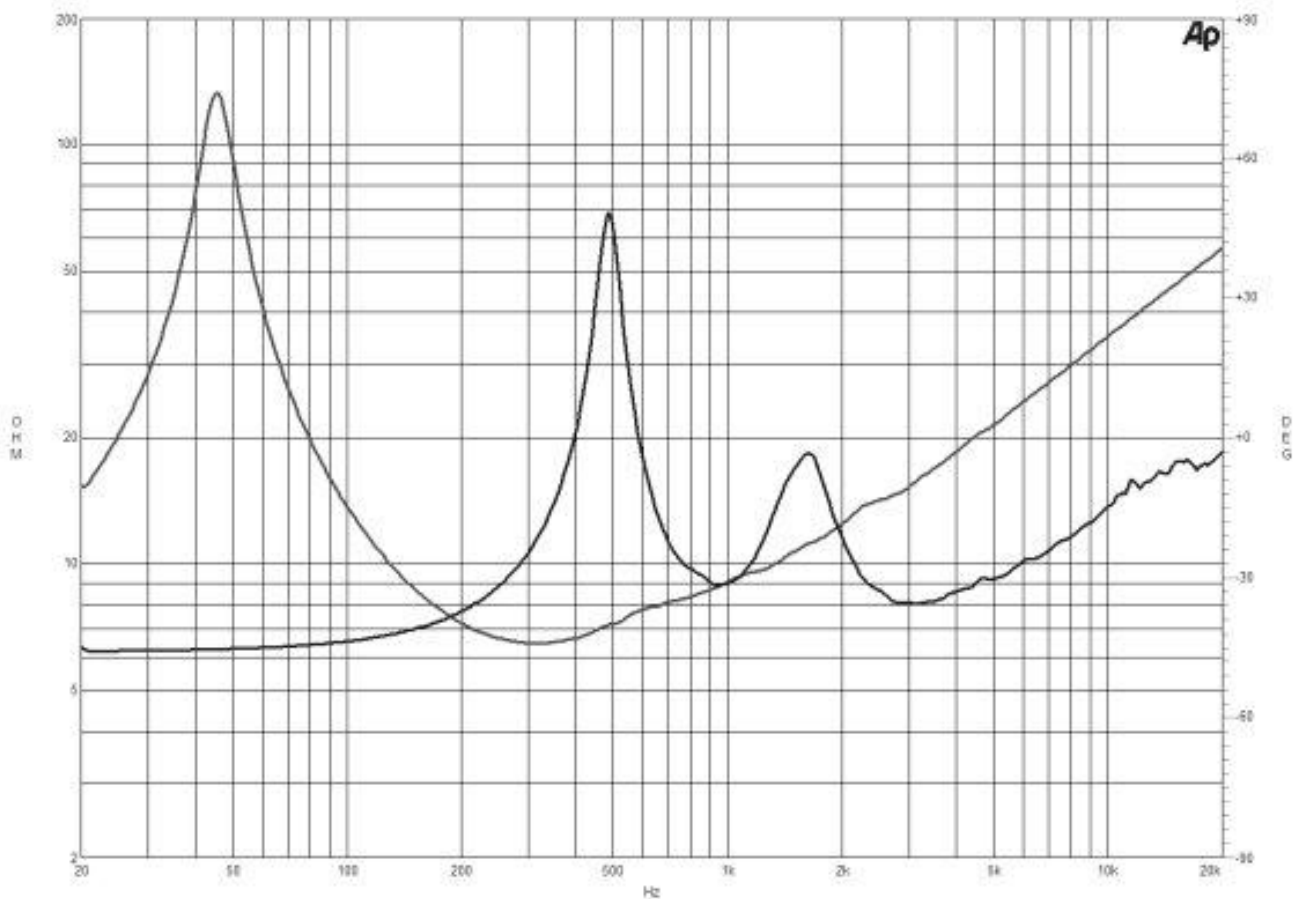
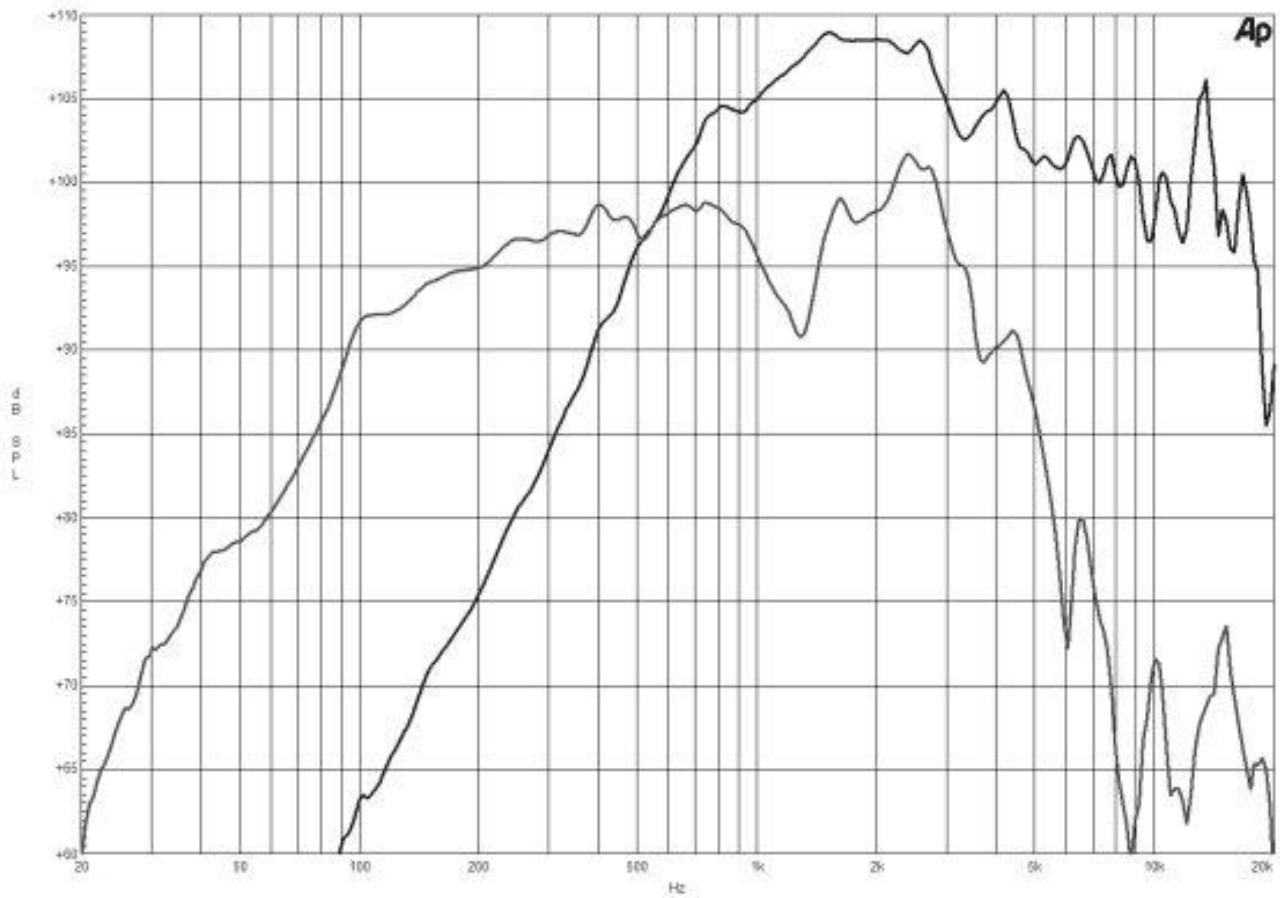
MOUNTING AND SHIPPING INFO

Overall Diameter	315 mm (12.4 in)
Bolt Circle Diameter	298 mm (11.7 in)
Baffle Cutout Diameter	282 mm (11.1 in)
Depth	170 mm (6.7 in)
Flange and Gasket Thickness	14 mm (0.55 in)
Net Weight	5.1 kg (11.24 lb)
Shipping Units	1 pcs
Shipping Weight	6.4 kg (14.11 lb)
Shipping Box	425x425x224 mm (16.73x16.73x8.82 in)

SERVICE KITS

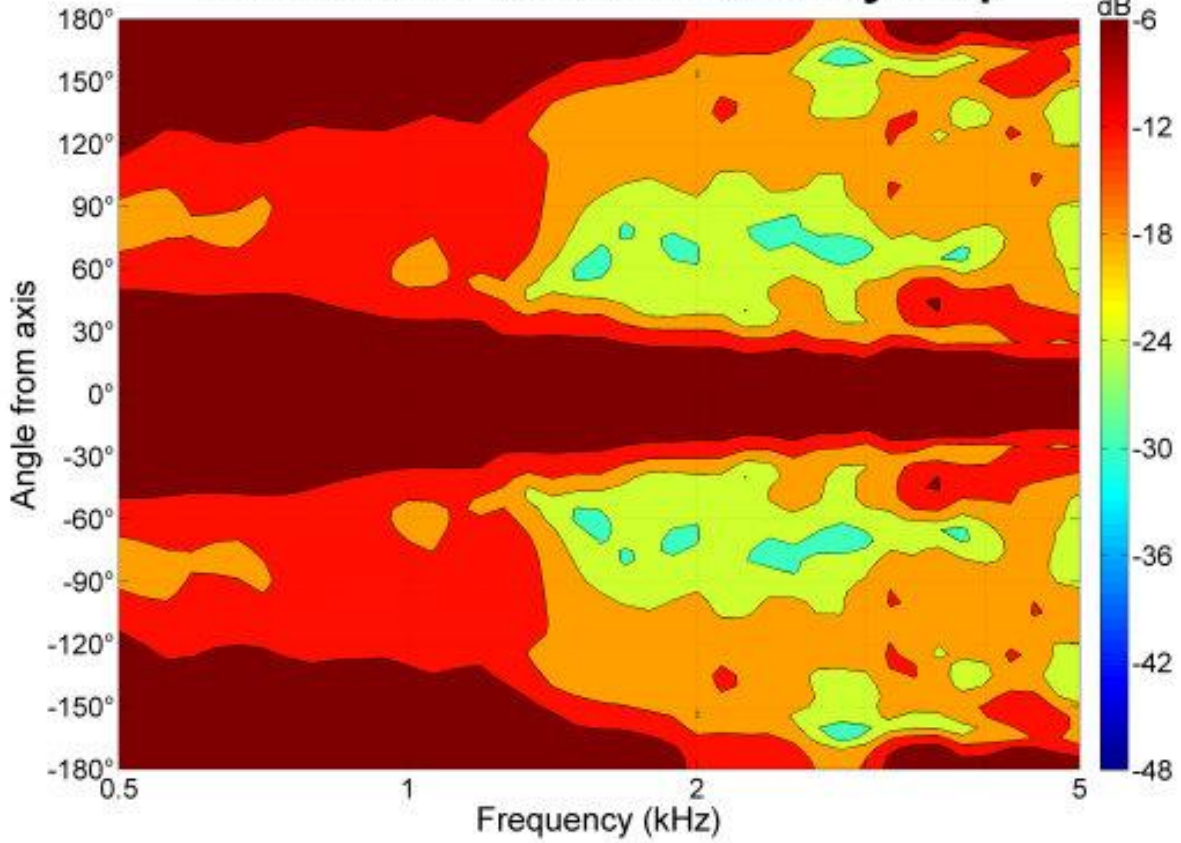
HF replacement-diaphragm	MMD9028M
LF recone-kits	RCK12CXN768

12CXN76 8 Ω

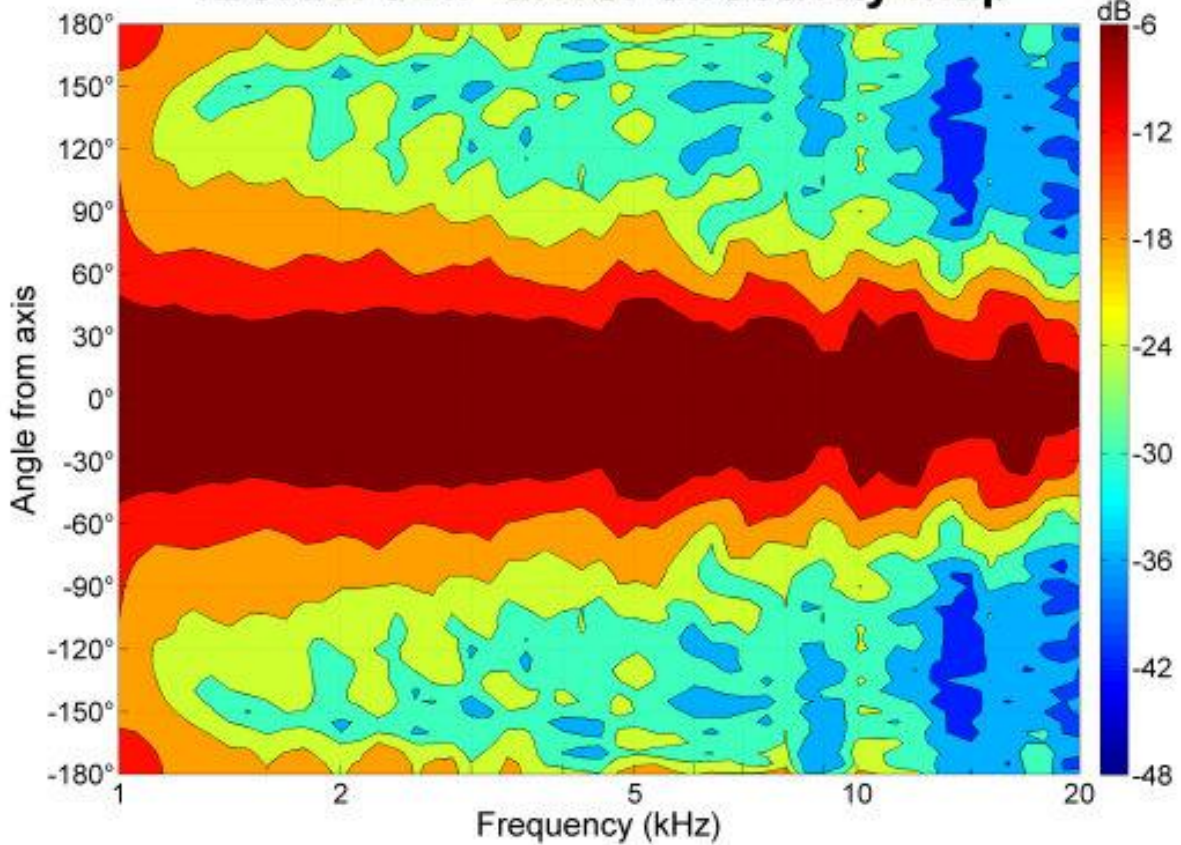


12CXN76 8 Ω

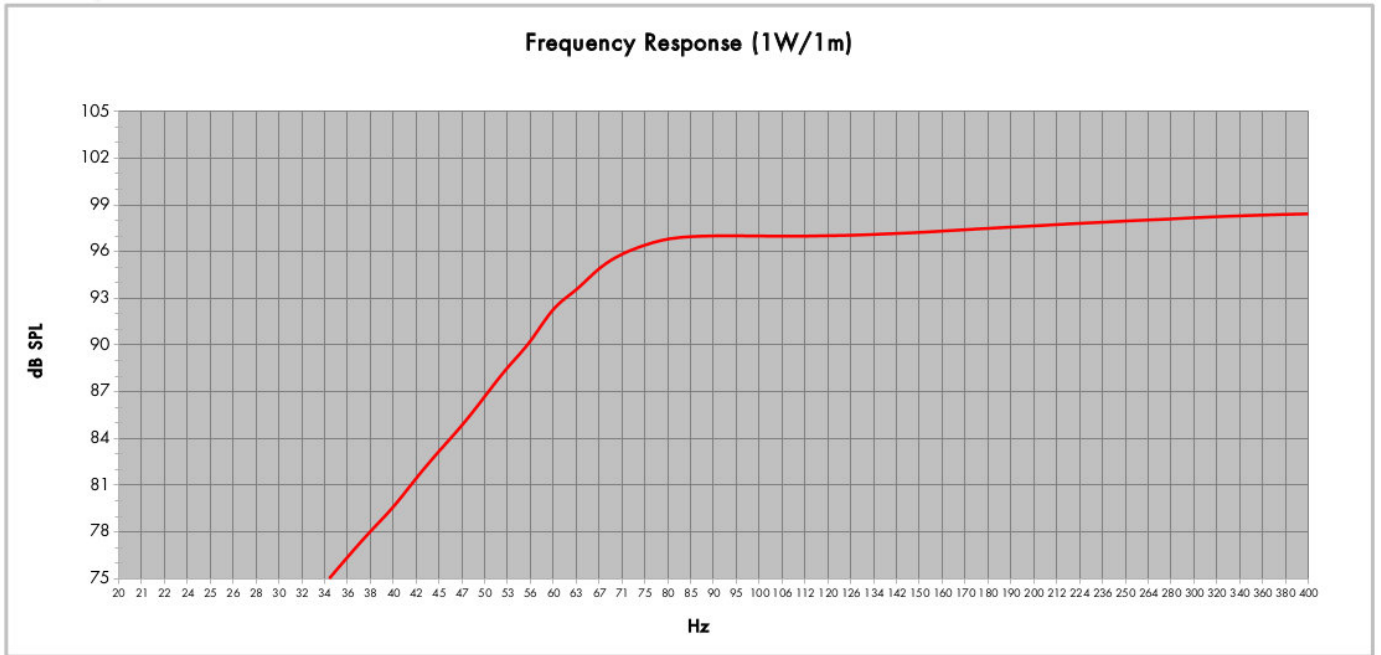
12CXN76 LF driver directivity map



12CXN76 HF driver directivity map



12CXN76 8 Ω



Model:	12CXN76	Configuration:	One Driver
Enclosure Type:	Bass Reflex		
Internal Net Volume (Litres):	40	QB:	7
Tuning Frequency (Hz):	65	Port Area (cm ²):	138,7
Frequency (-3 dB) (Hz):	70,9	Port Length (cm):	13,1

12CXN76 8 Ω

