

15CXN76 8 Ω

- 800 W continuous program power capacity
- 80° nominal coverage
- 40 - 18000 Hz response
- 99 dB sensitivity
- Single Neodymium magnet assembly
- Compatible with FB15CX40 crossover network



15CXN76 8 Ω

GENERAL

Nominal Diameter	380 mm (15 in)
Nominal Impedance	8 Ω
Frequency Range	40 Hz - 18000 Hz
Dispersion Angle	80 °
Included by -6 dB down points.	

PARAMETERS

Fs	38 Hz
Re	5.1 Ω
Qes	0.3
Qms	5.8
Qts	0.28
Vas	246 dm³ (8.6 ft³)
Sd	855 cm² (132.5 in²)
η0	3.7 %
Xvar	6 mm
Mms	82 g
Bl	17.8 Tm
Le	0.9 mH
EBP	127 Hz

SPECIFICATIONS HF UNIT

Nominal Diameter	380 mm (15 in)
Nominal Impedance	8 Ω
Minimum Impedance	8 Ω
Nominal Power Handling	80 W
2 hour test made with continuous pink noise signal within the range from the recommended crossover frequency to 20 kHz. Power calculated on rated minimum impedance. Loudspeaker in free air.	
Continuous Power Handling	160 W
Power on Continuous Program is defined as 3 dB greater than the Nominal rating.	
Sensitivity	105 dB
Applied RMS Voltage is set to 2.83V.	
Recommended Crossover	1.2 kHz
12 dB/oct. or higher slope high-pass filter.	
Voice Coil Diameter	75 mm (3 in)
Winding Material	Aluminium
Inductance	0.14 mH
Flux Density	1.9 T
Diaphragm Material	Polyester/Titanium

SPECIFICATIONS LF UNIT

Nominal Diameter	380 mm (15 in)
Nominal Impedance	8 Ω
Minimum Impedance	6 Ω
Nominal Power Handling	400 W
2 hours test made with continuous pink noise signal within the range Fs-10Fs. Power calculated on rated minimum impedance. Loudspeaker in free air.	
Continuous Power Handling	800 W
Power on Continuous Program is defined as 3 dB greater than the Nominal rating.	
Sensitivity	99 dB
Applied RMS Voltage is set to 2.83V.	
Voice Coil Diameter	76 mm (3 in)
Winding Material	Copper
Former Material	Glass Fibre
Winding Depth	16.5 mm (0.65 in)
Magnetic Gap Depth	8 mm (0.31 in)
Flux Density	1.15 T
Woofer Cone Treatment	WP Waterproof Front Side

DESIGN

Magnet Material	Neodymium Ring
Woofer Cone Treatment	WP Waterproof Front Side

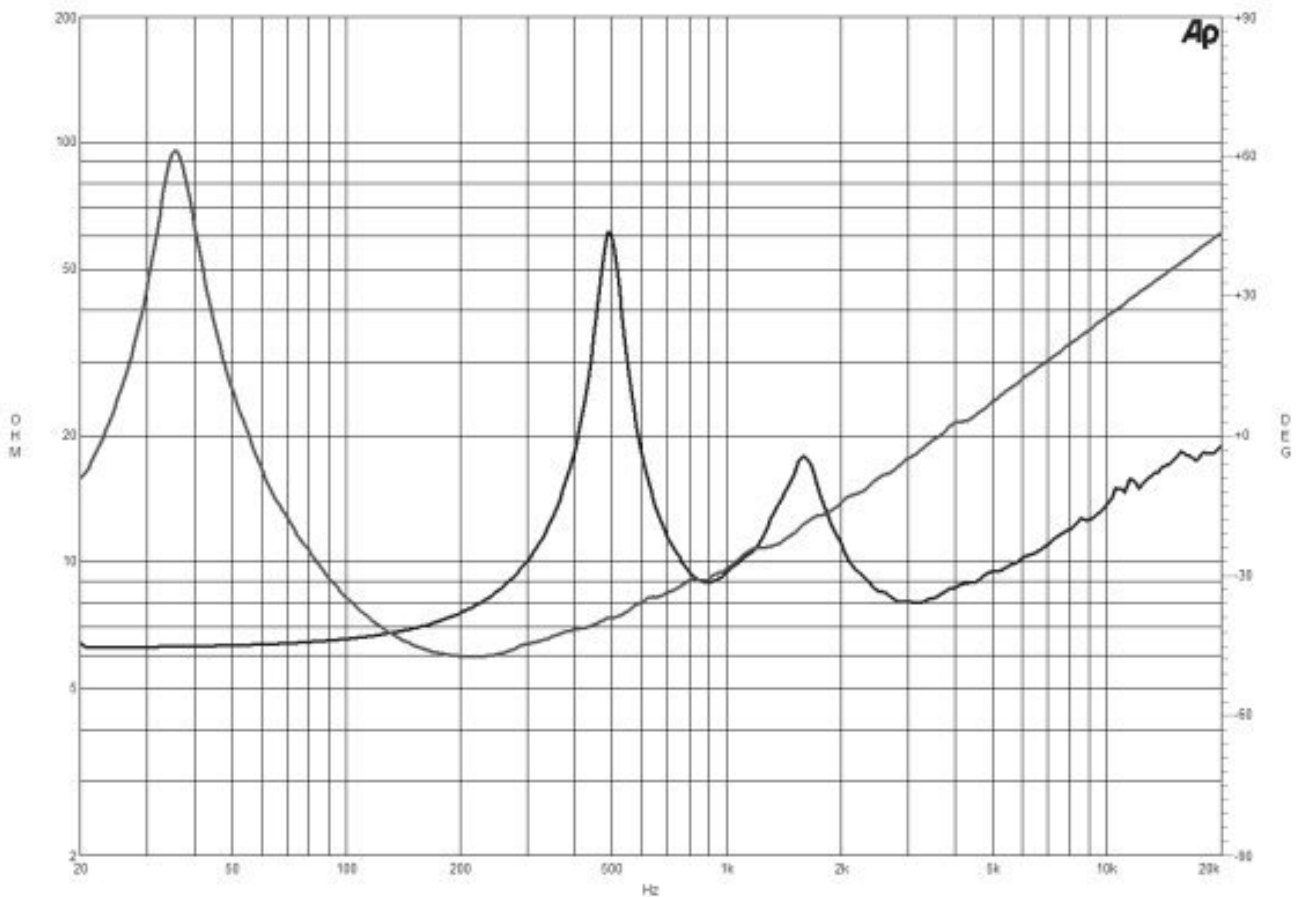
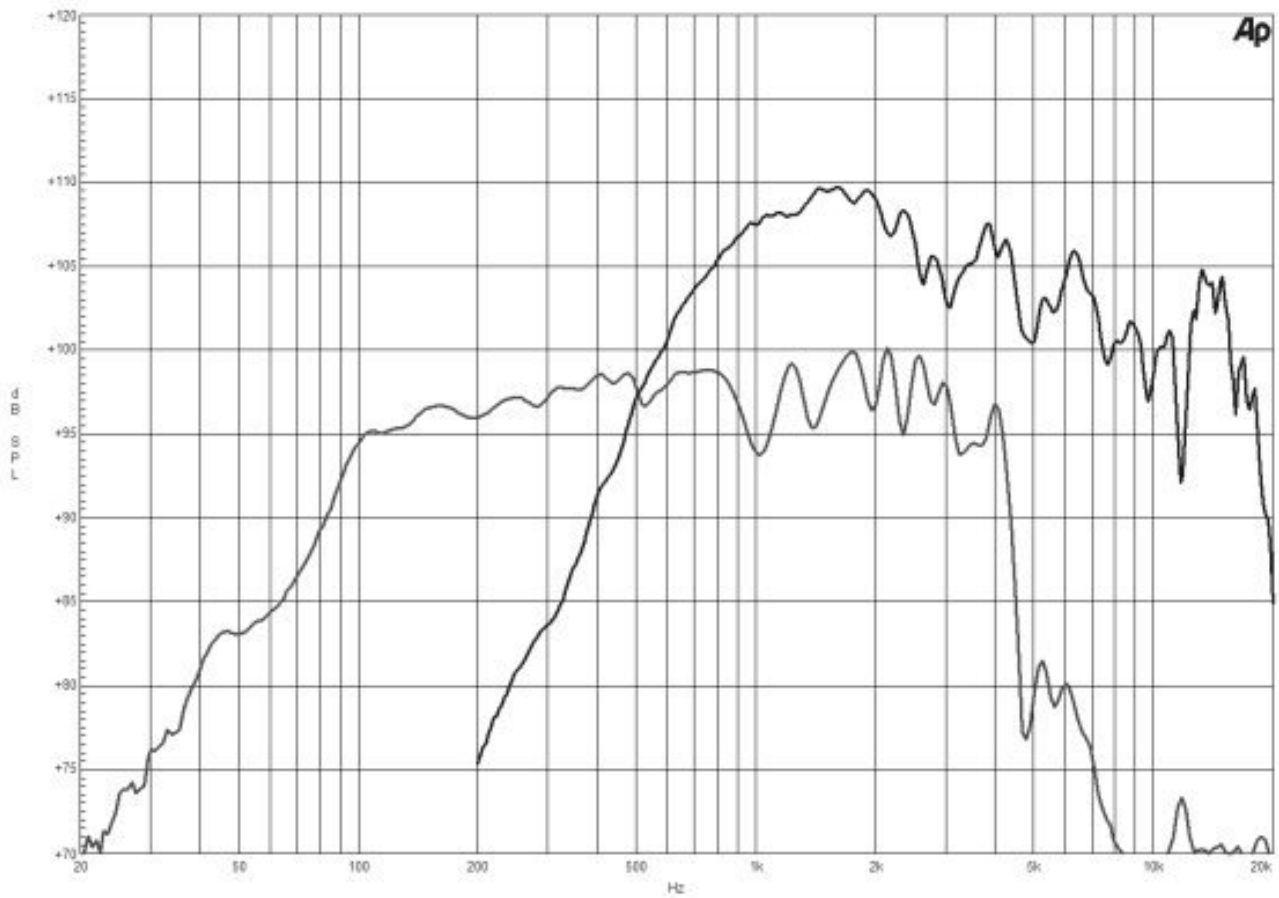
MOUNTING AND SHIPPING INFO

Overall Diameter	393 mm (15.5 in)
Bolt Circle Diameter	374 mm (14.7 in)
Baffle Cutout Diameter	354 mm (13.94 in)
Depth	198 mm (7.8 in)
Flange and Gasket Thickness	16 mm (0.62 in)
Net Weight	5.4 kg (11.9 lb)
Shipping Units	1 pcs
Shipping Weight	7 kg (15.43 lb)
Shipping Box	500x495x275 mm (19.69x19.49x10.83 in)

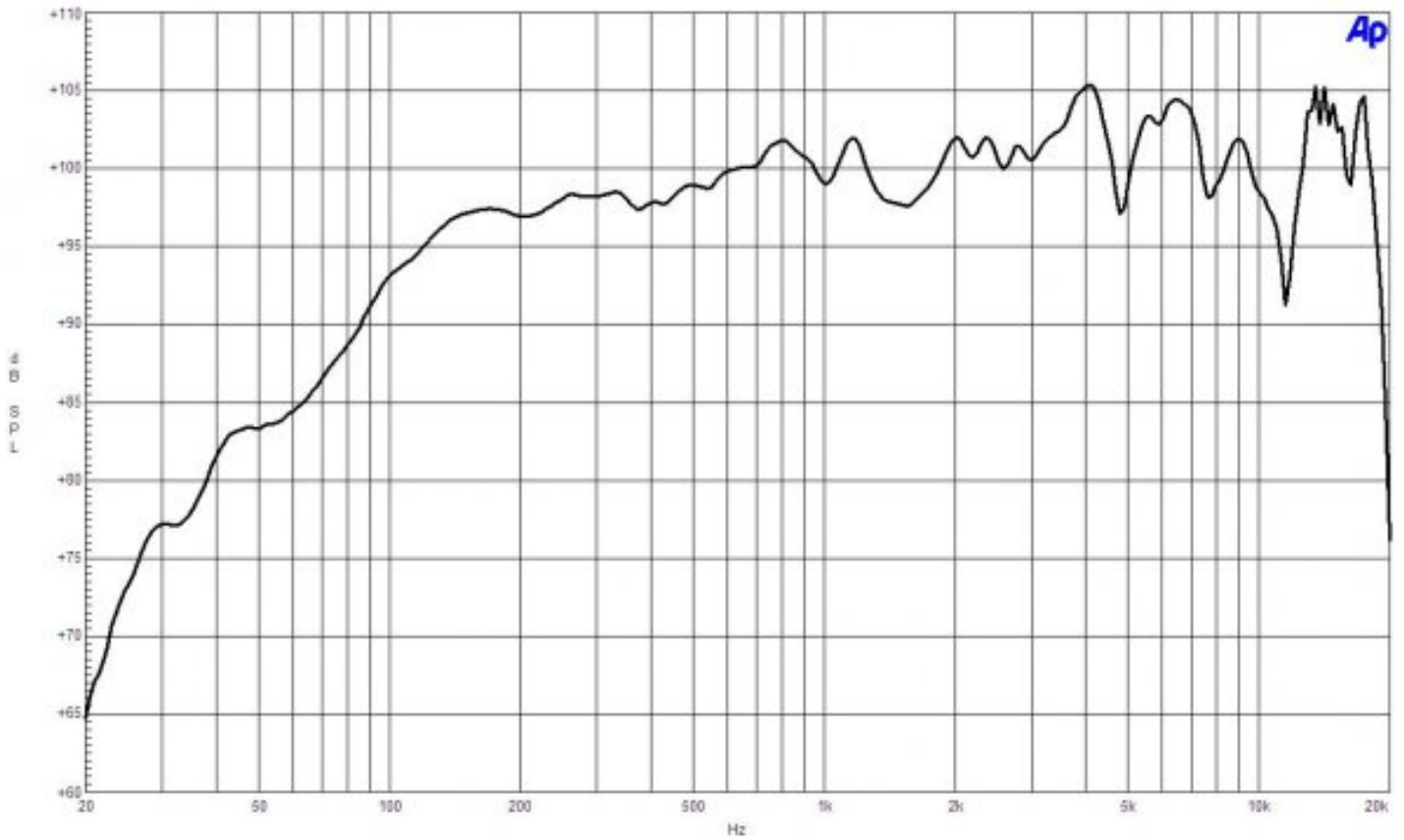
SERVICE KITS

HF replacement-diaphragm	MMD9028M
LF recone-kits	RCK15CXN768

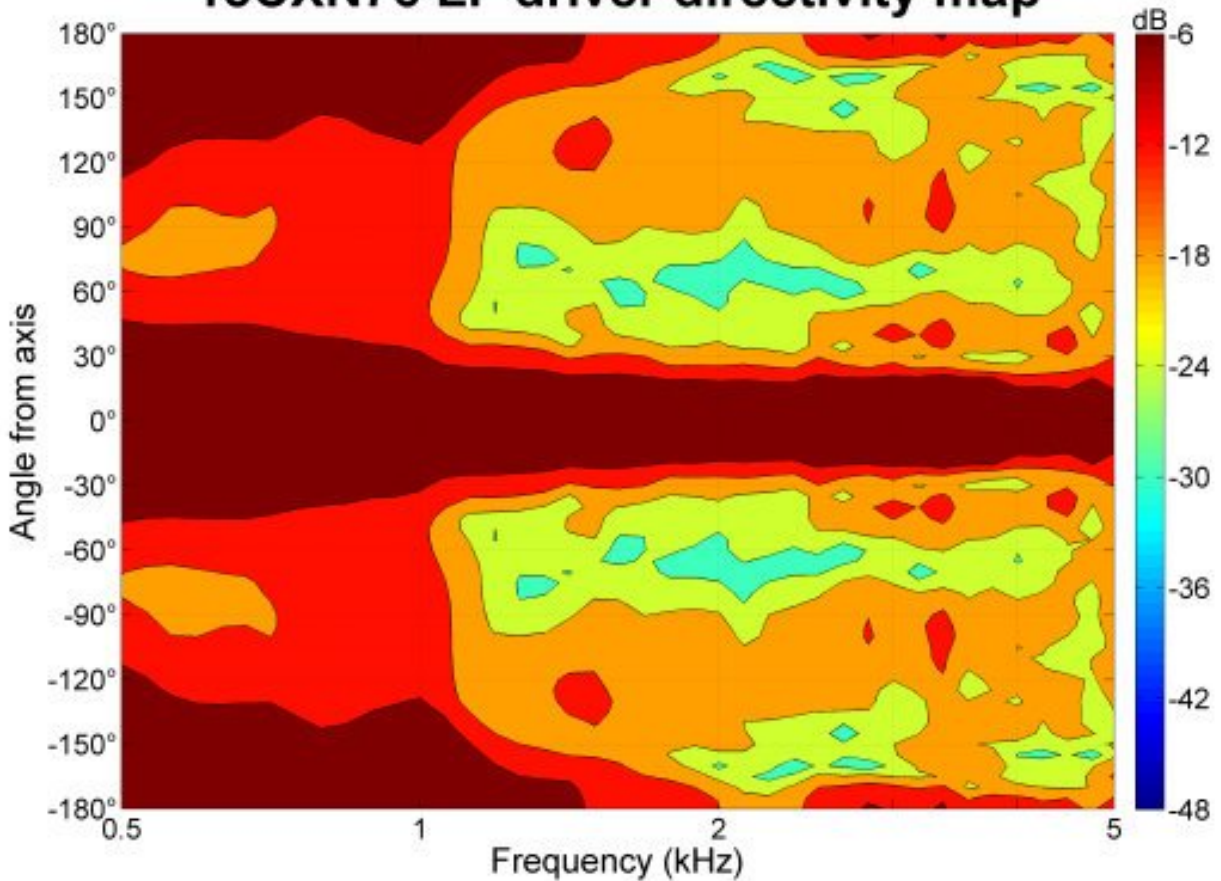
15CXN76 8 Ω



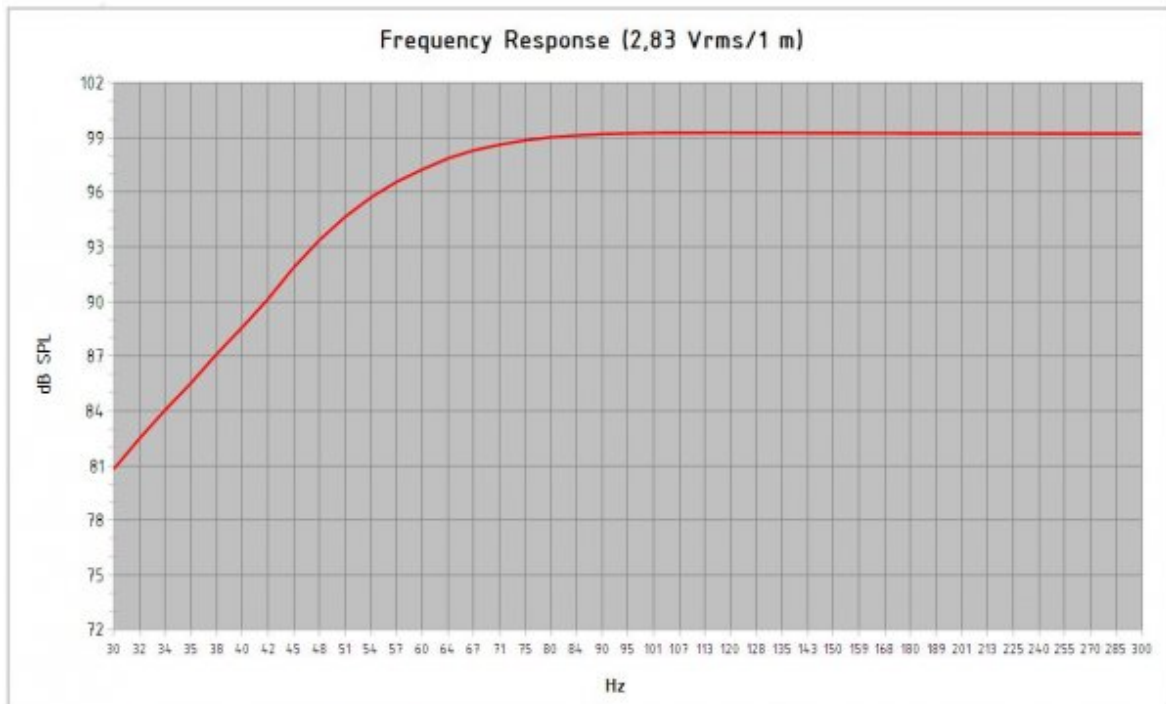
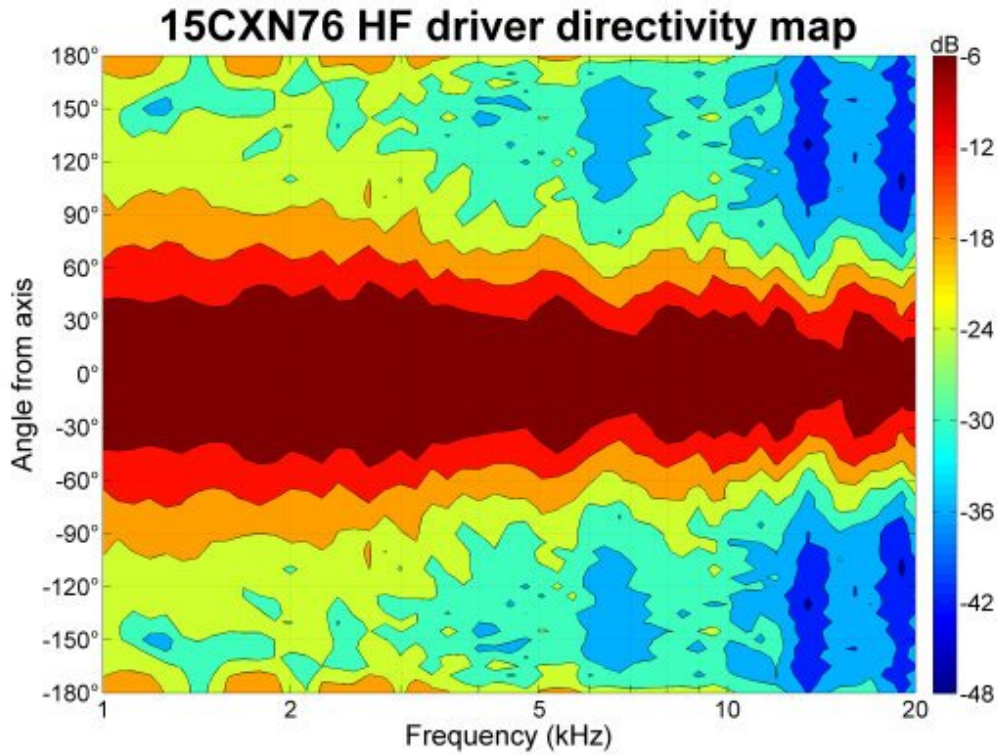
15CXN76 8 Ω



15CXN76 LF driver directivity map



15CXN76 8 Ω



Model:	15 CXN 76		
Enclosure Type:	Bass Reflex		
Internal Net Volume (Liters):	100	Port Area (cm ²):	169,8
Tuning Frequency (Hz):	50	Port Length (cm):	7,5
Frequency (-3 dB) (Hz):	55,7		
Excursion Limited Maximum SPL at 1 meter (dB):	121,3	equal to	214,5 Watts (Bass Band Power Rating)
Thermal Limited Maximum SPL at 1 meter (dB):	124,0	equal to	400,0 Watts (Mid Band Power Rating)

15CXN76 8 Ω

