

5FCX44 8 Ω

- 200 W continuous program power capacity
- 70° nominal coverage
- 60 - 18000 Hz response
- 91 dB sensitivity
- 19 mm (3/4") HF unit exit diameter



5FCX44 8 Ω

GENERAL

Nominal Diameter	127 mm (5 in)
Nominal Impedance	8 Ω
Frequency Range	60 Hz - 18000 Hz
Dispersion Angle	70 °
Included by -6 dB down points.	

PARAMETERS

Fs	61 Hz
Re	5.6 Ω
Qes	0.25
Qms	7.8
Qts	0.25
Vas	7 dm³ (0.25 ft³)
Sd	95 cm² (14.7 in²)
η0	0.6 %
Xvar	5 mm
Mms	12 g
Bl	10.5 Tm
Le	0.8 mH
EBP	244 Hz

SPECIFICATIONS HF UNIT

Nominal Diameter	127 mm (5 in)
Nominal Impedance	8 Ω
Minimum Impedance	6.5 Ω
Nominal Power Handling	10 W
2 hour test made with continuous pink noise signal within the range from the recommended crossover frequency to 20 kHz. Power calculated on rated minimum impedance. Loudspeaker in free air.	
Continuous Power Handling	20 W
Power on Continuous Program is defined as 3 dB greater than the Nominal rating.	
Sensitivity	107.5 dB
Applied RMS Voltage is set to 2.83V.	
Recommended Crossover	2.5 kHz
12 dB/oct. or higher slope high-pass filter.	
Voice Coil Diameter	25 mm (1 in)
Winding Material	Aluminium
Inductance	0.1 mH
Flux Density	1.65 T
Diaphragm Material	Polyester

SPECIFICATIONS LF UNIT

Nominal Diameter	127 mm (5 in)
Nominal Impedance	8 Ω
Minimum Impedance	6.5 Ω
Nominal Power Handling	100 W
2 hours test made with continuous pink noise signal within the range Fs-10Fs. Power calculated on rated minimum impedance. Loudspeaker in free air.	
Continuous Power Handling	200 W
Power on Continuous Program is defined as 3 dB greater than the Nominal rating.	
Sensitivity	91 dB
Applied RMS Voltage is set to 2.83V.	
Voice Coil Diameter	44 mm (1.7 in)
Winding Material	Copper
Former Material	Kapton
Winding Depth	9 mm (0.35 in)
Magnetic Gap Depth	6 mm (0.24 in)
Flux Density	1.07 T
Woofer Cone Treatment	WP Waterproof Front Side

DESIGN

Magnet Material	Ferrite (LF) - Neodym. Ring (HF)
Woofer Cone Treatment	WP Waterproof Front Side

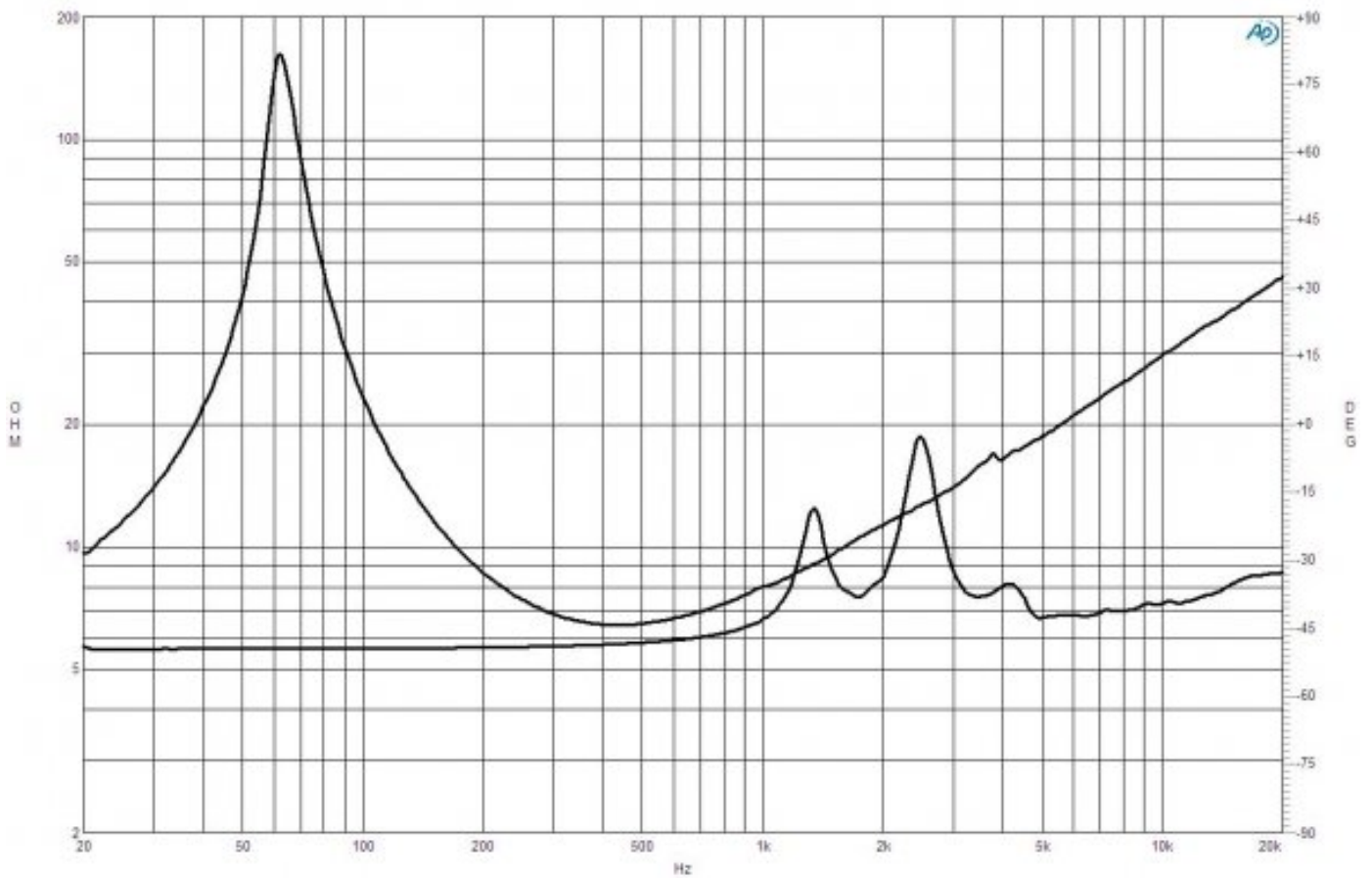
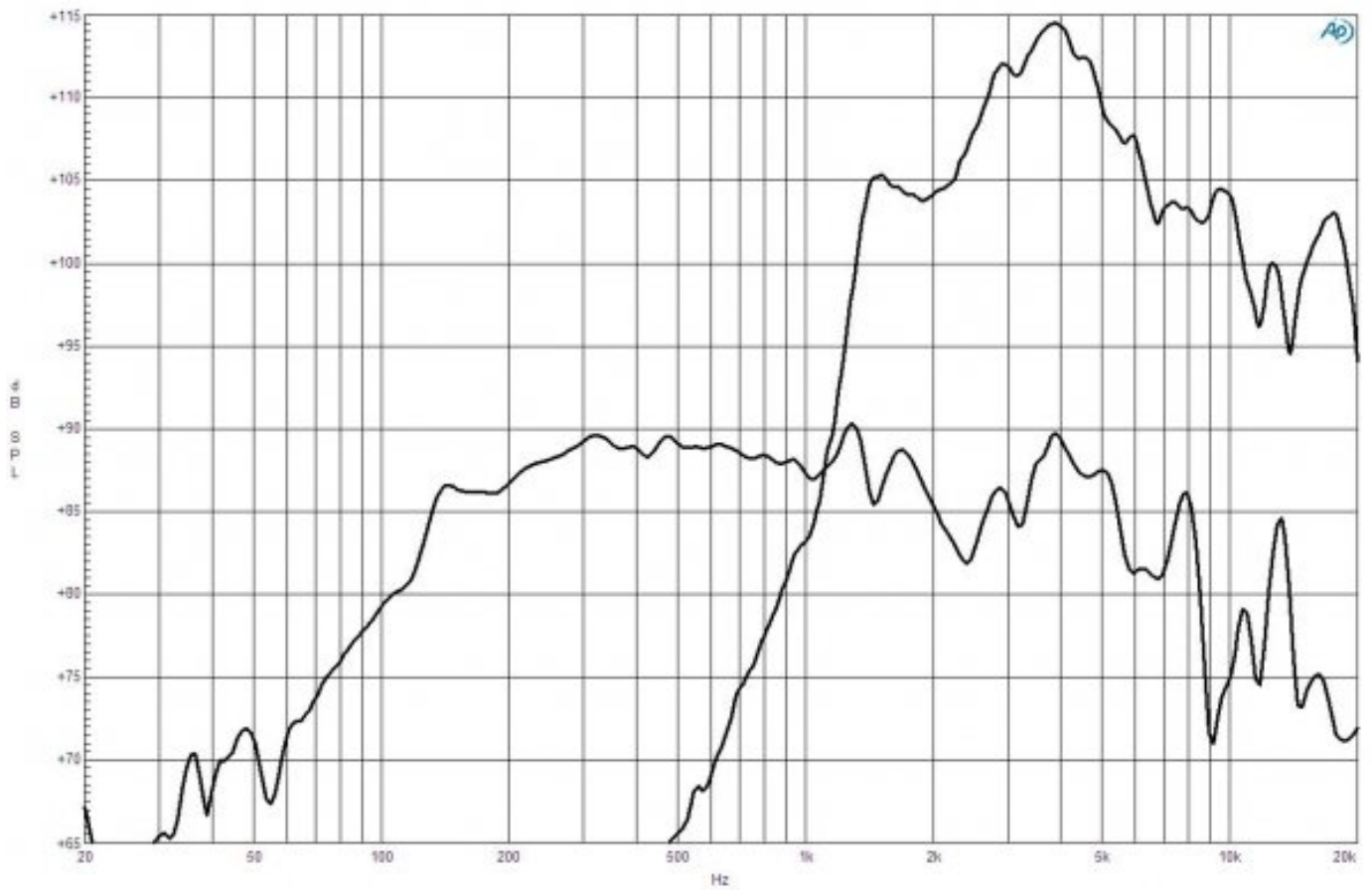
MOUNTING AND SHIPPING INFO

Overall Diameter	136 mm (5.35 in)
Bolt Circle Diameter	142 mm (5.6 in)
Baffle Cutout Diameter	122 mm (4.8 in)
Depth	110 mm (4.33 in)
Flange and Gasket Thickness	8 mm (0.31 in)
Net Weight	1.85 kg (4.1 lb)
Shipping Units	1 pcs
Shipping Weight	2.3 kg (5.07 lb)
Shipping Box	255x255x150 mm (10.04x10.04x5.91 in)

SERVICE KITS

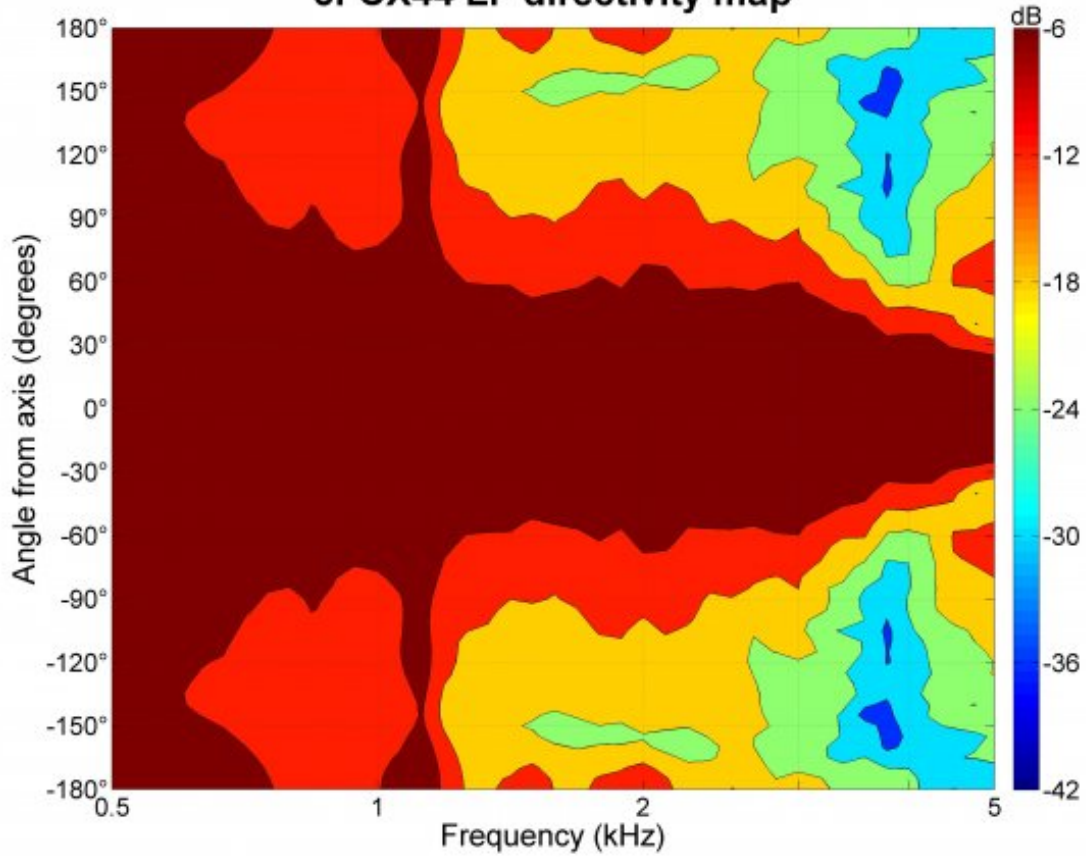
HF replacement-diaphragm	MMDDE58
LF recone-kits	RCK005FCX448

5FCX44 8 Ω

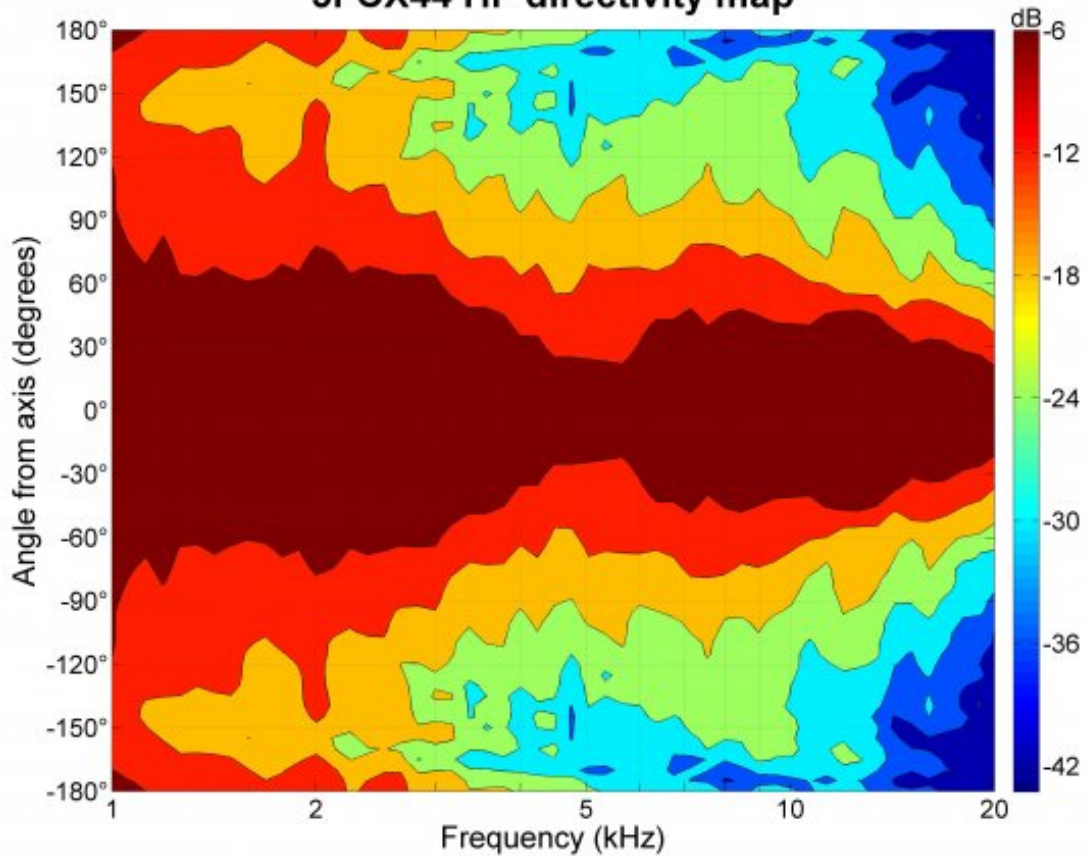


5FCX44 8 Ω

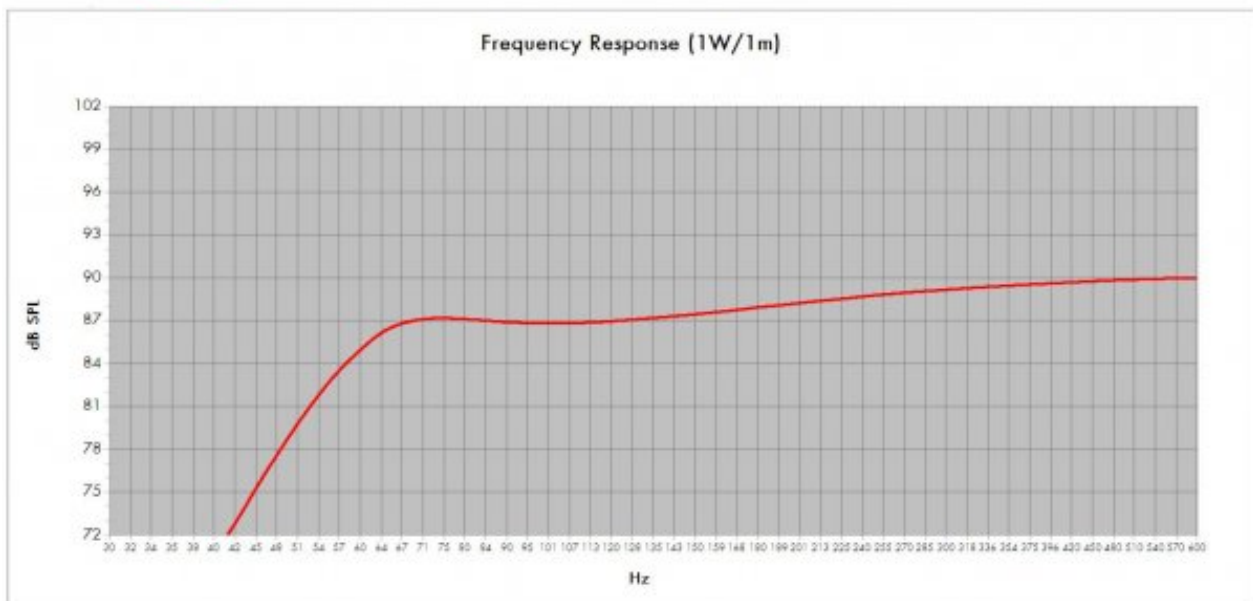
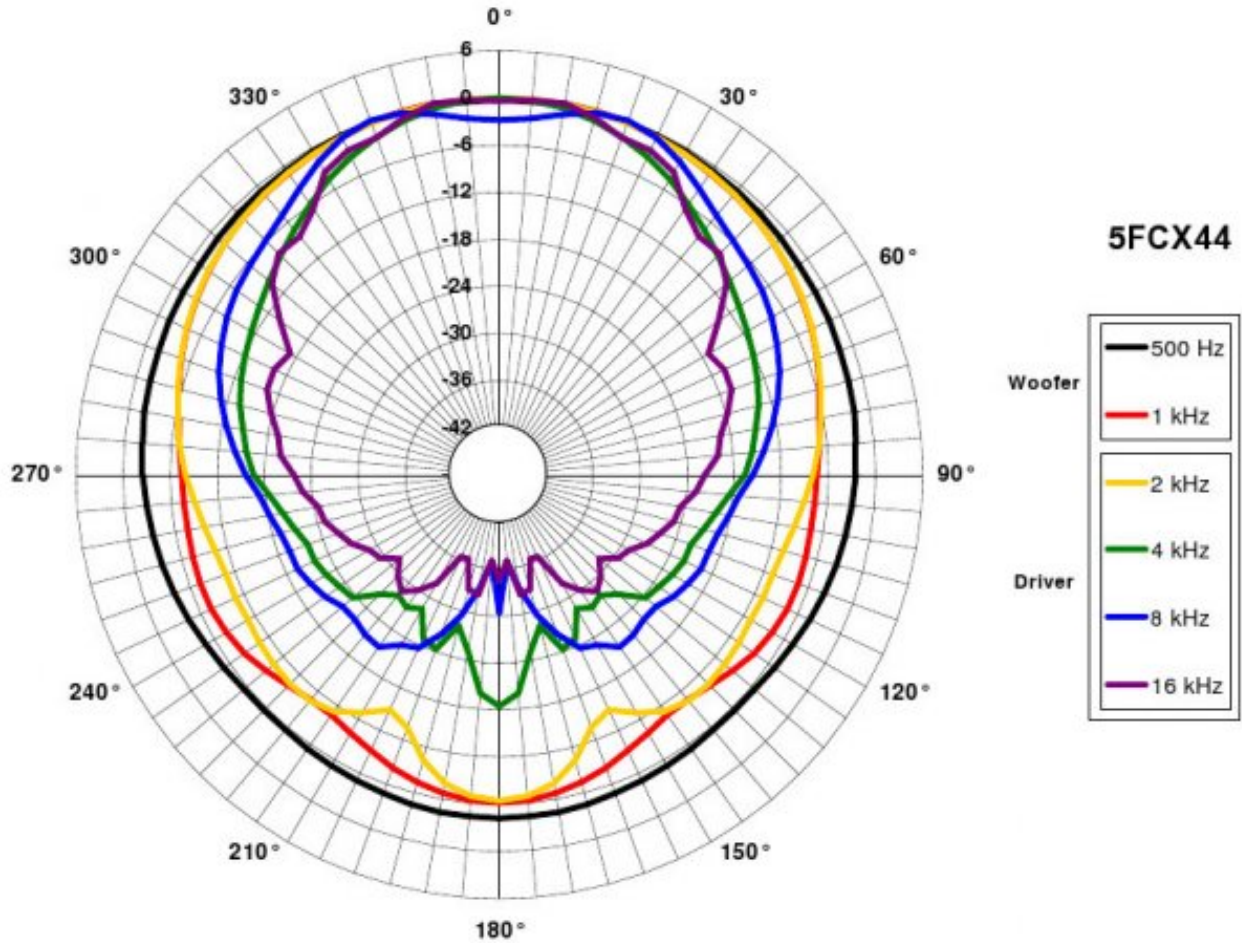
5FCX44 LF directivity map



5FCX44 HF directivity map



5FCX44 8 Ω



Model:	5FCX44	Configuration:	One Driver
Enclosure Type:	Bass Reflex	Internal Net Volume [Litres]:	7
		QB:	5
		Tuning Frequency [Hz]:	63
		Port Area [cm²]:	15,2
		Frequency [-3 dB] [Hz]:	145,4
		Port Length [cm]:	12,6
Excursion Limited Maximum SPL at 1 meter [dB]:	110,3	equal to	100,0 Watts [Bass Band Power Rating]
Thermal Limited Maximum SPL at 1 meter [dB]:	110,3	equal to	100,0 Watts [Mid Band Power Rating]



Professional loudspeaker transducers since 1946

B&C Speakers S.p.A. Via Poggiomoro, 1 - Loc. Vallina, 50012 Bagno a Ripoli (FI) | ITALY
Tel. +39 055 65721 | Fax +39 055 6572312 | mail@bcspeakers.com

5FCX44 8 Ω

