

## ME142

### SPECIFICATIONS

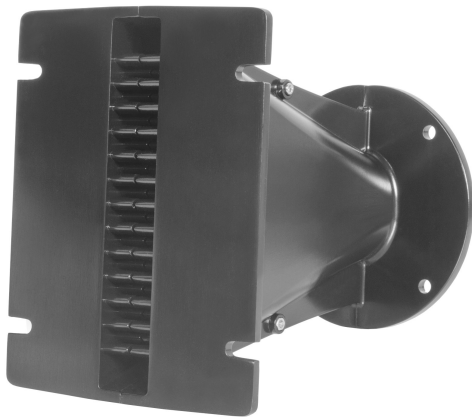
Horn mounted on B&C DE 750 compression driver.

Throat Diameter	<b>36 mm (1.4 in)</b>
Nominal Coverage Horizontal	<b>120°</b>
Cutoff Frequency	<b>0.8 kHz</b>
Material	<b>Cast Aluminium</b>
Design	<b>Line Array Optimized Waveguide</b>
Dimensions	<b>163x130x180 mm (6.42x5.12x7.09 in)</b>

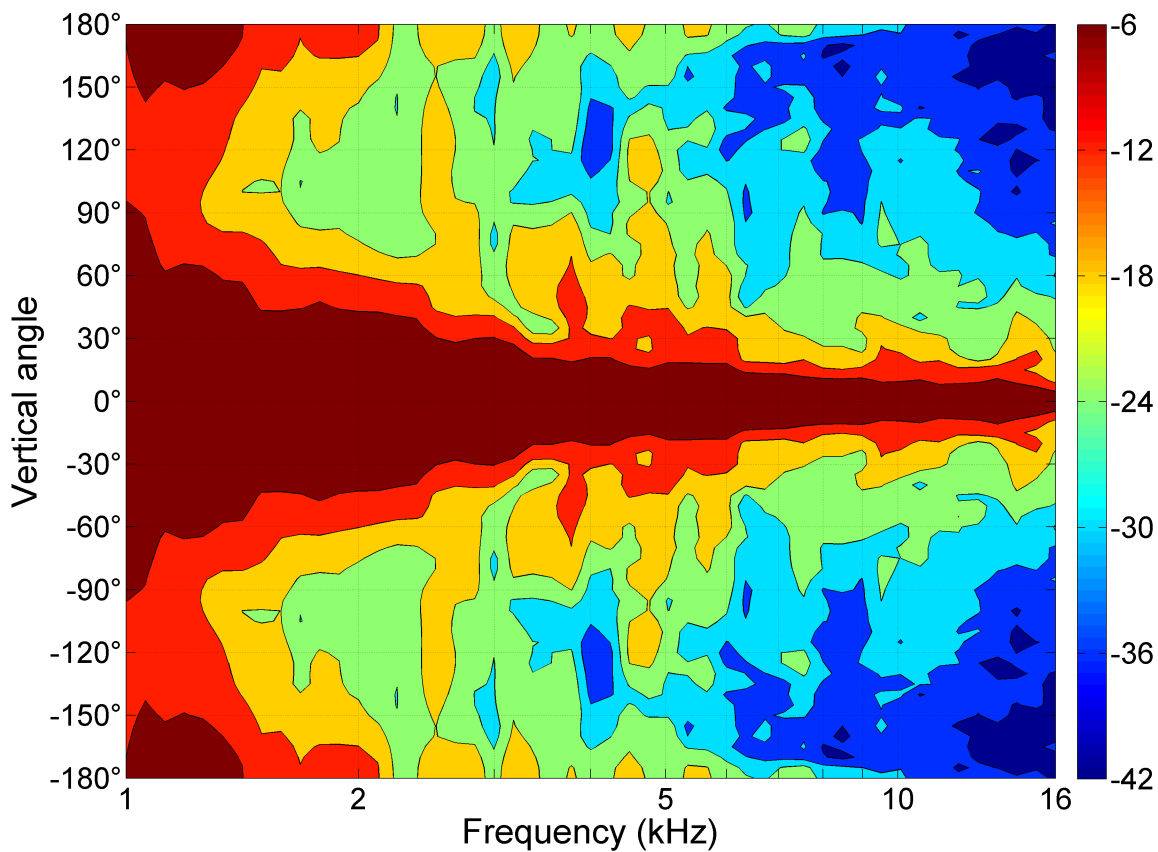
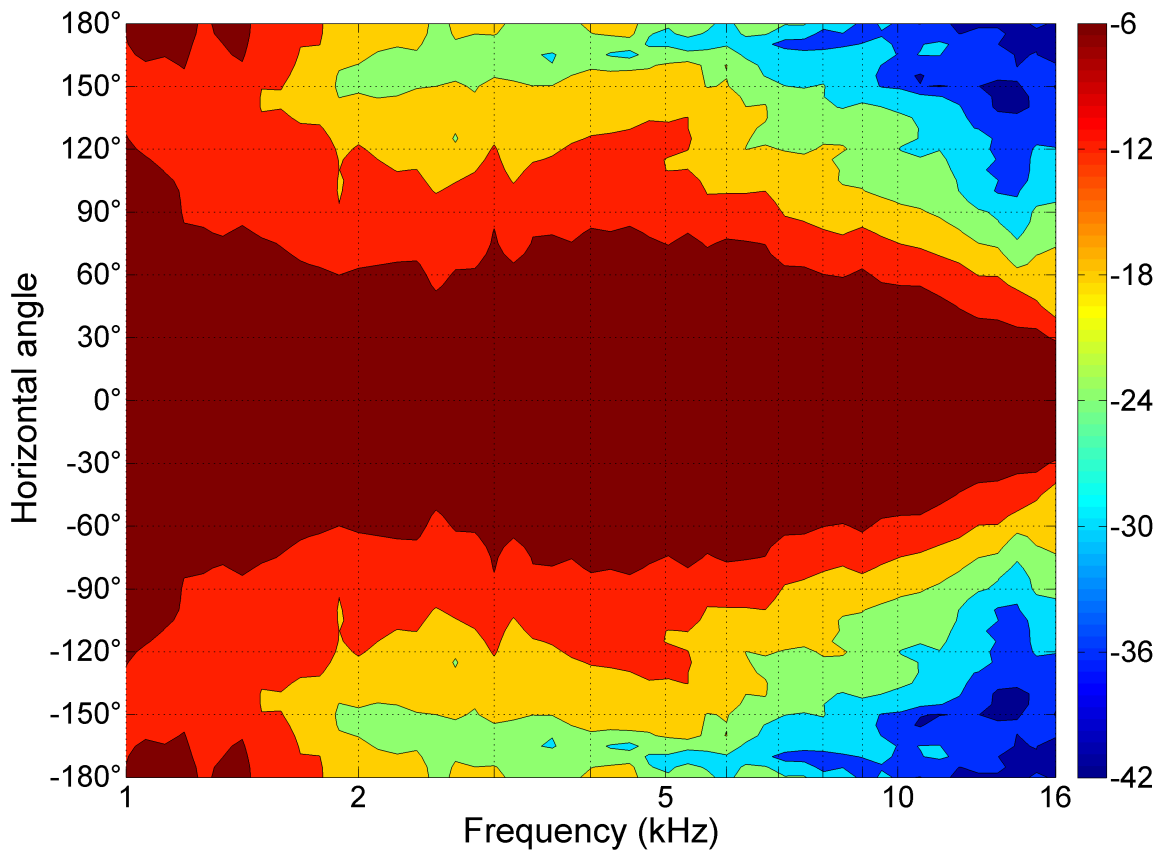
### MOUNTING AND SHIPPING INFO

Other details	<b>Four 6.5 mm holes at 90° on 102 mm (4 in) diameter</b>
Baffle Cutout Dimension	<b>153 mm (6 in)</b>
Air Volume Occupied by Driver	<b>0.34 dm<sup>3</sup> (0.01 ft<sup>3</sup>)</b>
Net Weight	<b>1.05 kg (2.31 lb)</b>
Shipping Units	<b>1 pcs</b>
Shipping Weight	<b>1.15 kg (2.53 lb)</b>
Shipping Box	<b>190x135x165 mm (7.48x5.31x6.50 in)</b>

- 1.4" throat entry
- Line Array optimized Waveguide
- 120° max horizontal coverage
- Vertical coverage depends on configuration
- Very good loading down to 800 Hz



**ME142**



**ME142**

