

ME242

SPECIFICATIONS

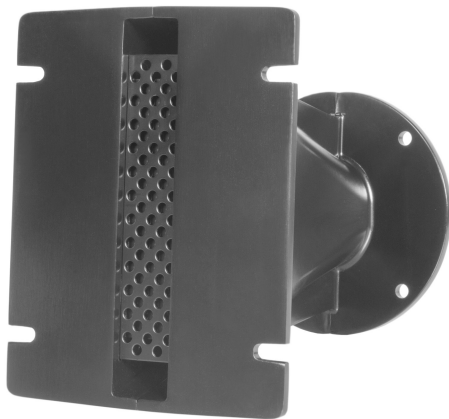
Horn mounted on B&C DE 750 compression driver.

Throat Diameter	36 mm (1.4 in)
Nominal Coverage Horizontal	120°
Cutoff Frequency	0.8 kHz
Material	Cast Aluminium
Design	Line Array Optimized Waveguide
Dimensions	163x130x180 mm (6.42x5.12x7.09 in)

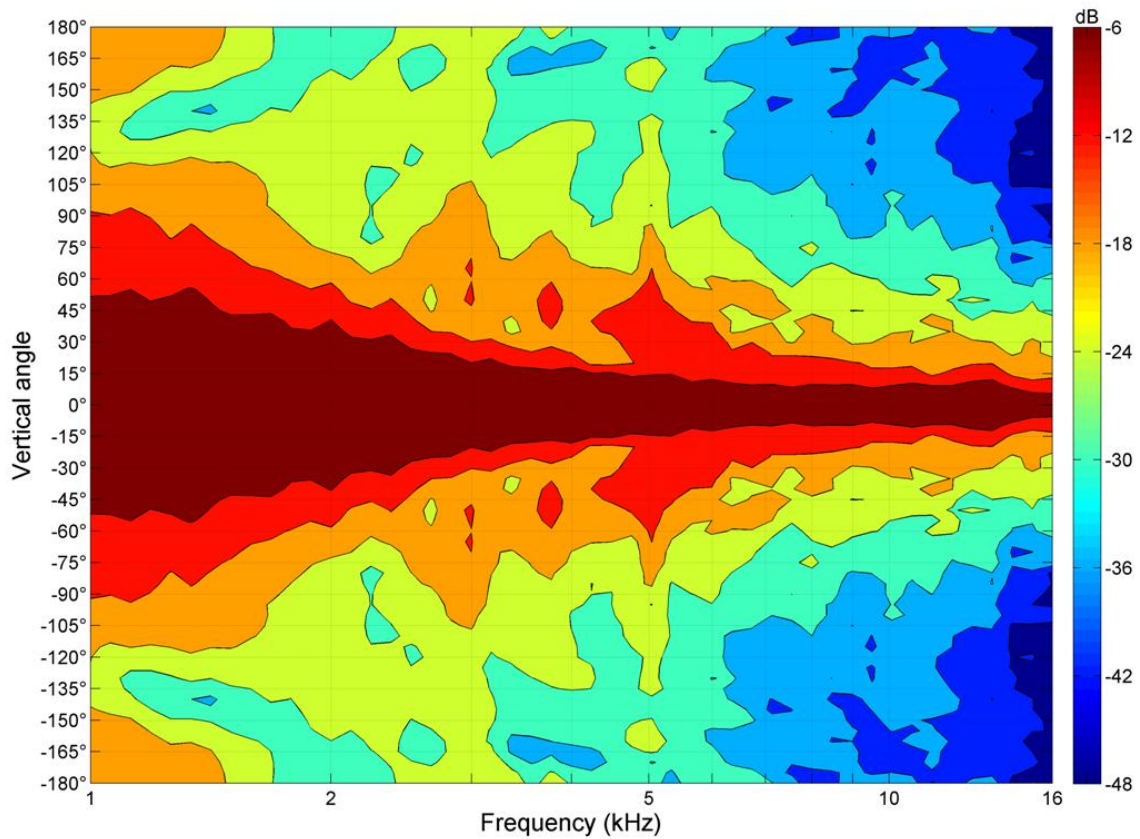
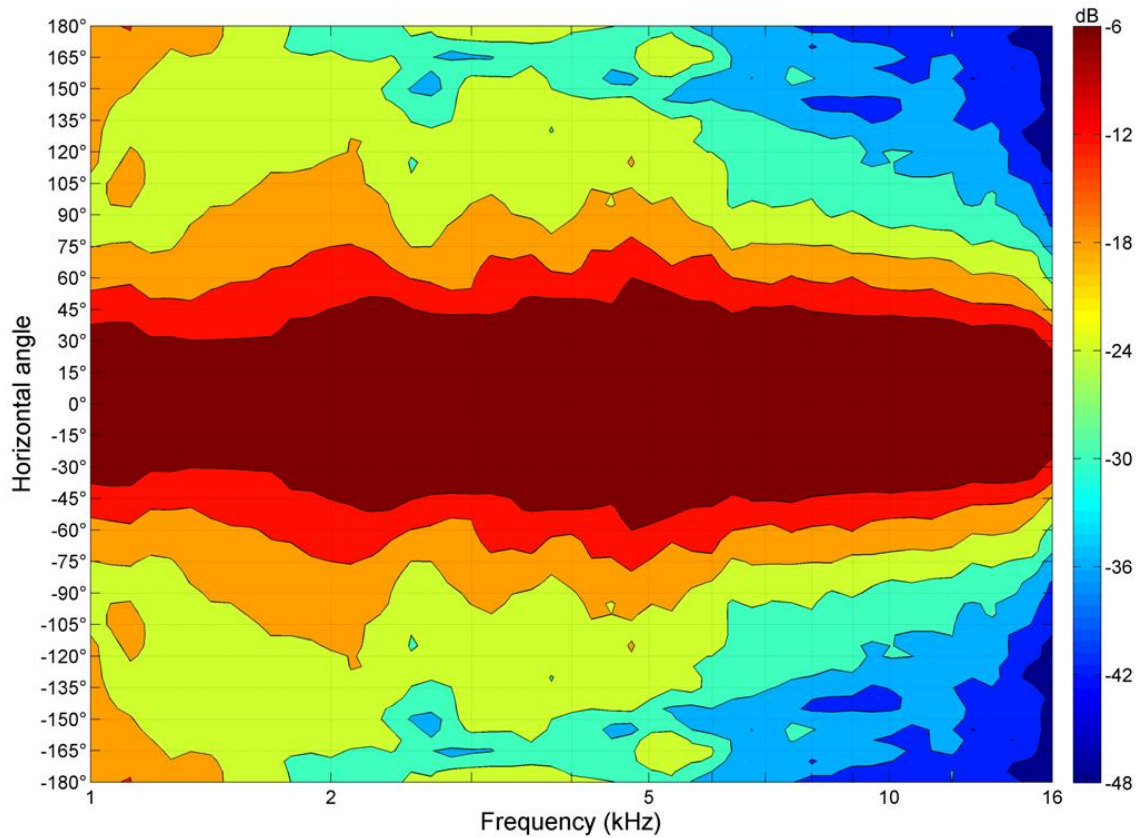
MOUNTING AND SHIPPING INFO

Baffle Cutout Dimension	153 mm (6 in)
Air Volume Occupied by Driver	0.34 dm³ (0.01 ft³)
Net Weight	0.94 kg (2.08 lb)
Shipping Units	1 pcs
Shipping Weight	1.04 kg (2.3 lb)
Shipping Box	190x135x165 mm (7.48x5.31x6.50 in)

- 1.4" throat entry
- Line Array optimized Waveguide
- 120° max horizontal coverage
- Vertical coverage depends on configuration
- Very good loading down to 800 Hz



ME242



ME242

