

ME60

SPECIFICATIONS

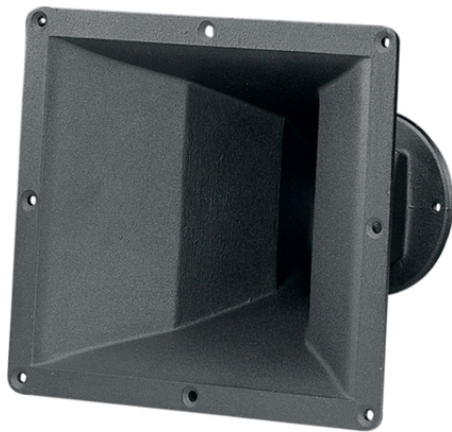
Horn mounted on B&C DE 750 compression driver.

Throat Diameter	50 mm (2 in)
Nominal Coverage Horizontal	60°
Nominal Coverage Vertical	40°
Cutoff Frequency	0.8 kHz
Material	Cast Aluminium
Dimensions	270x237x202 mm (10.6x9.3x7.9 in)

- 2" throat entry
- 60° x 40° nominal coverage
- Constant Directivity
- Excellent loading down to 800 Hz

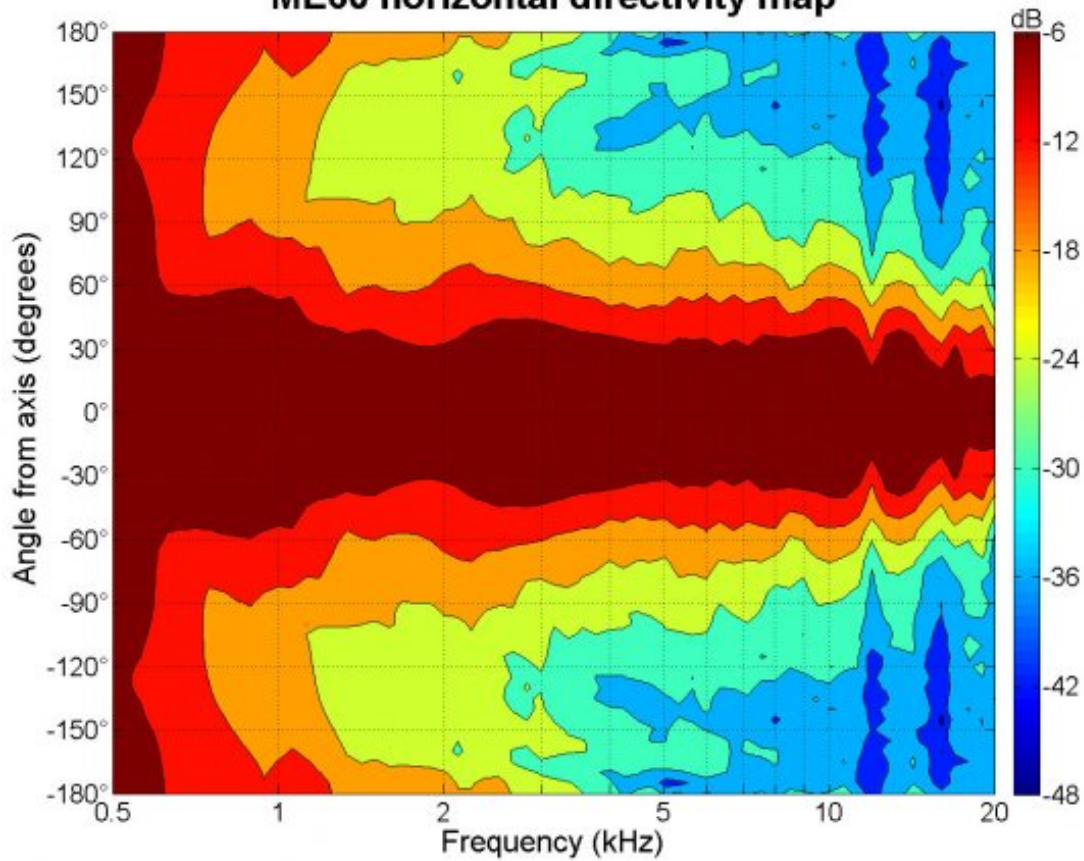
MOUNTING AND SHIPPING INFO

Baffle Cutout Dimension	232 mm (9.1 in)
Air Volume Occupied by Driver	0.45 dm³ (0.02 ft³)
Net Weight	1.69 kg (3.73 lb)
Shipping Units	1 pcs
Shipping Weight	2.29 kg (5.06 lb)
Shipping Box	290x260x260 mm (11.42x10.24x10.24 in)

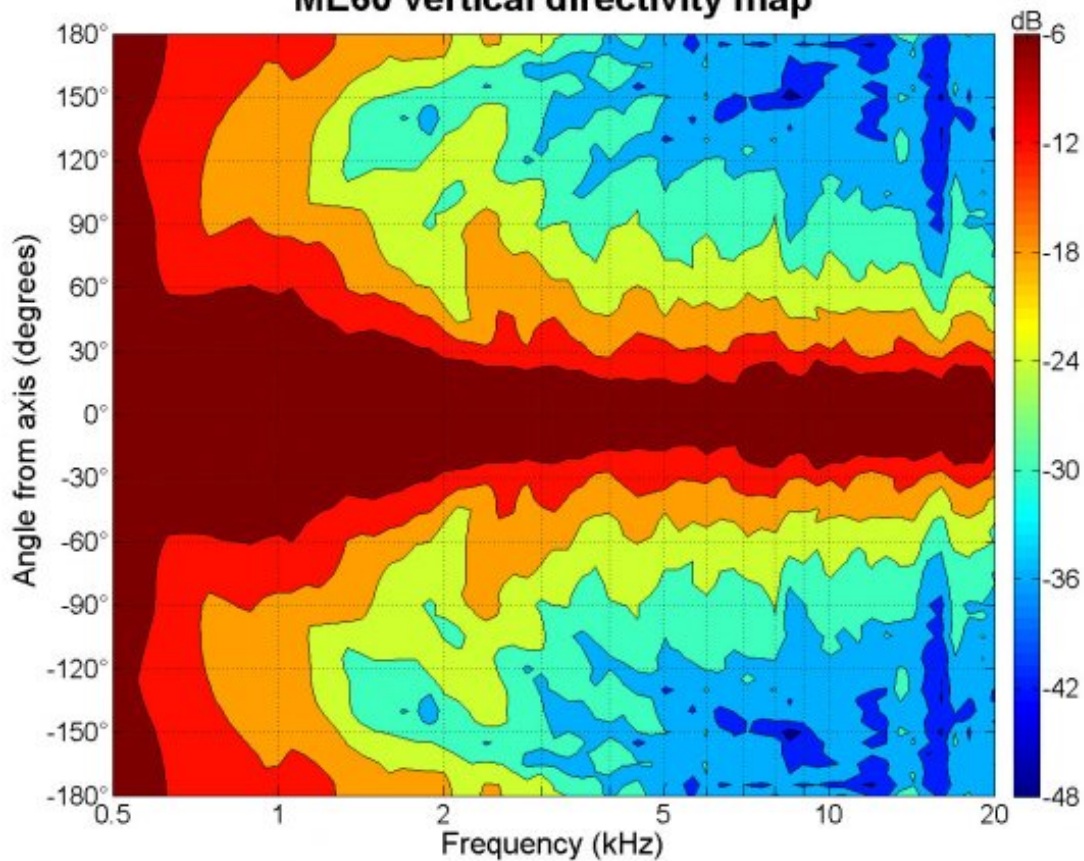


ME60

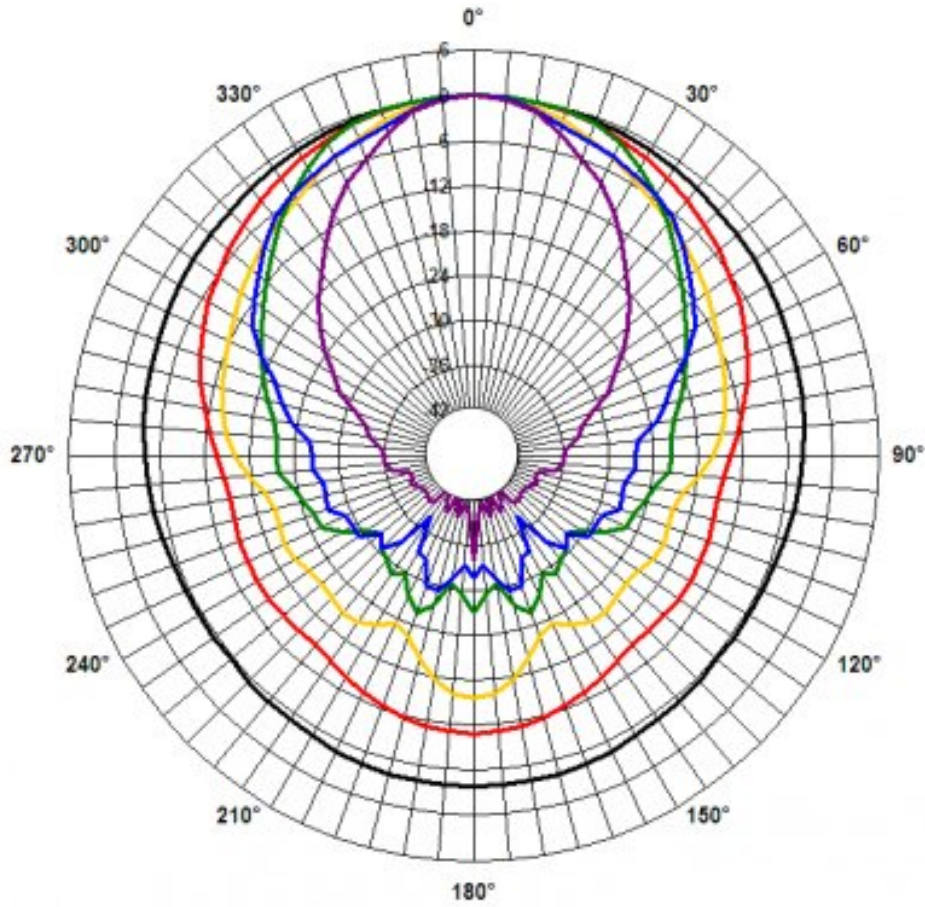
ME60 horizontal directivity map



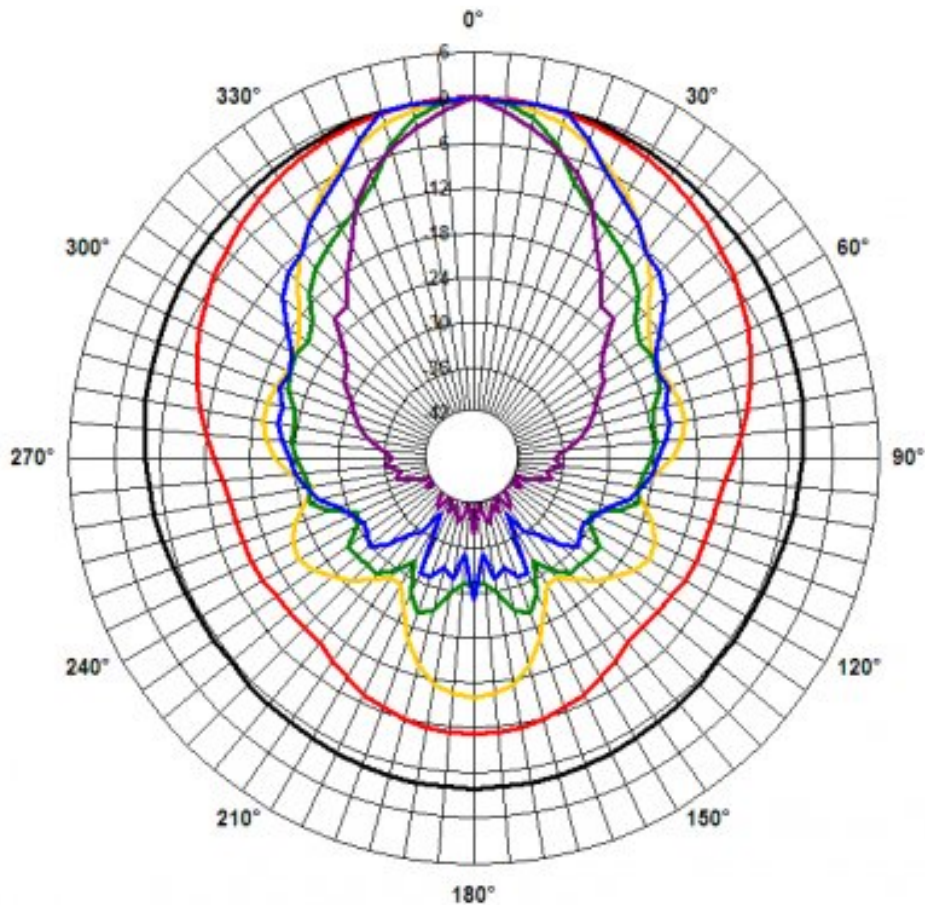
ME60 vertical directivity map



ME60



ME60 orizz.



ME60 vert.



ME60

