

# ME464

## SPECIFICATIONS

Horn mounted on B&C DE 750 compression driver.

Throat Diameter	<b>36 mm (1.4 in)</b>
Nominal Coverage Horizontal	<b>80°</b>
Nominal Coverage Vertical	<b>60°</b>
Cutoff Frequency	<b>0.3 kHz</b>
Material	<b>Polyurethane</b>
Design	<b>Constant Directivity</b>
Dimensions	<b>575x505x460 mm (22.64x19.88x18.11 in)</b>

## MOUNTING AND SHIPPING INFO

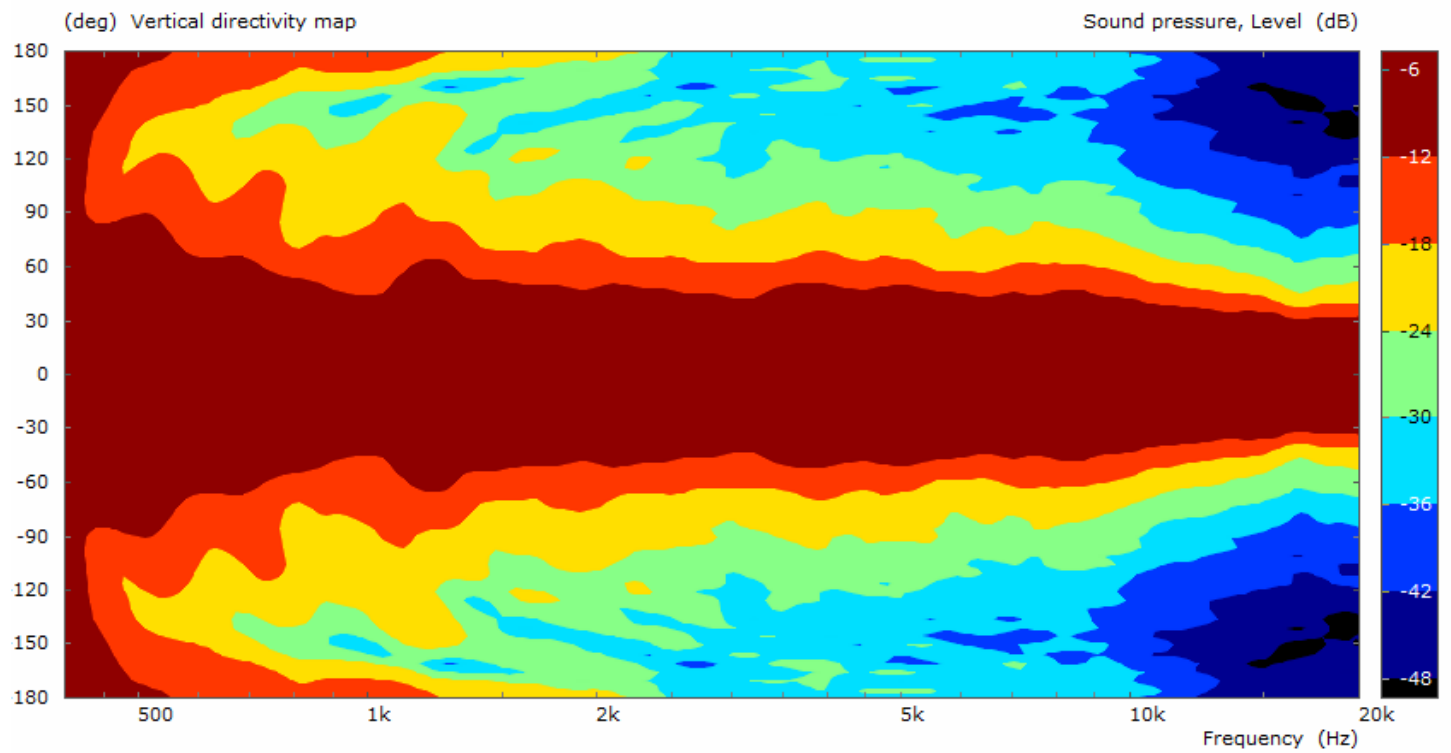
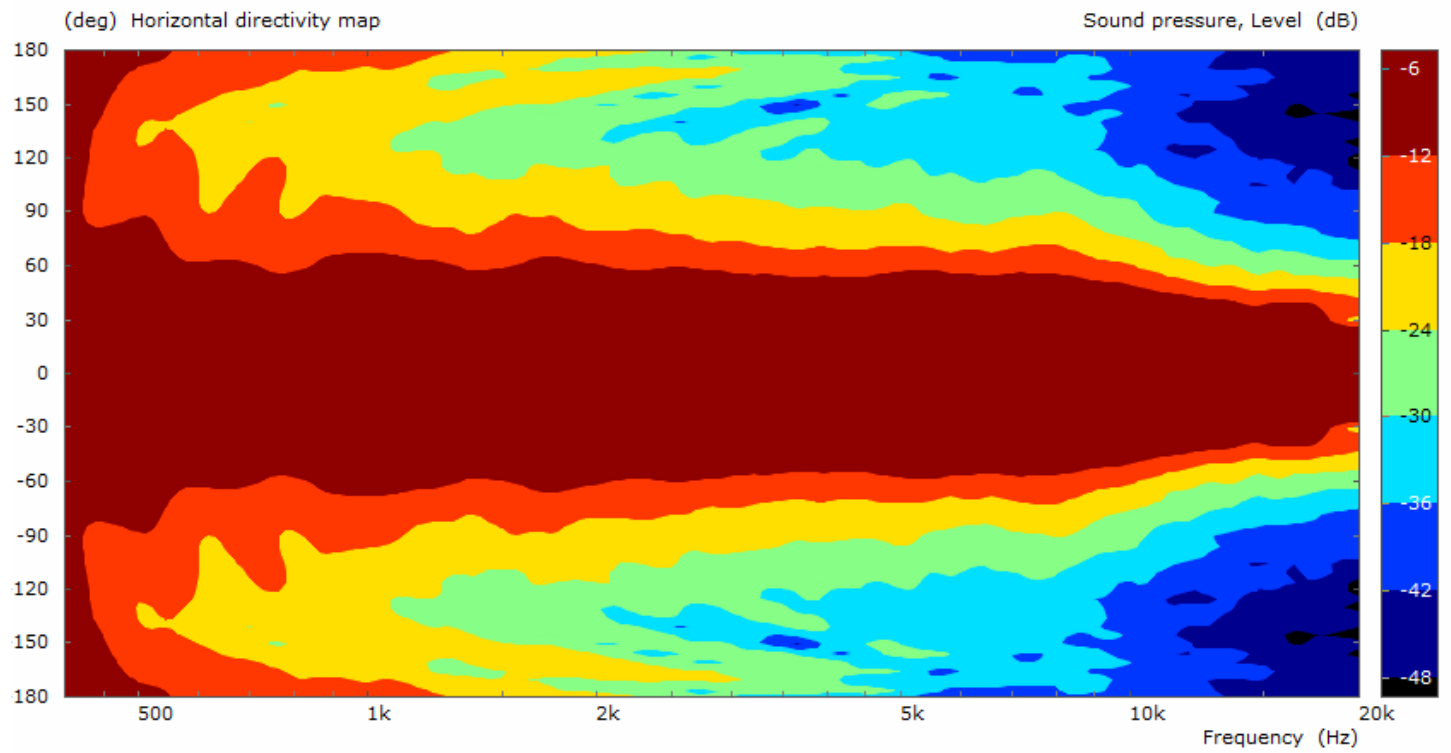
Other details	<b>4x 6.5 mm (0.255 in) holes 90° on 102 mm (4 in) diameter</b>
Baffle Cutout Dimension	<b>538 mm (21.18 in)</b>
Air Volume Occupied by Driver	<b>35.5 dm<sup>3</sup> (1.25 ft<sup>3</sup>)</b>
Net Weight	<b>4.75 kg (10.47 lb)</b>
Shipping Units	<b>1 pcs</b>
Shipping Weight	<b>7.66 kg (16.89 lb)</b>
Shipping Box	<b>610x533x508 mm (24.02x20.98x20.00 in)</b>

- 1.4" throat entry
- 80° x 60° nominal coverage
- Constant Directivity
- Excellent loading down to 300 Hz
- revised 20/10/20

Built to extract the full capabilities of our wide-bandwidth ring radiator drivers, B&C's new ME464 is the largest commercially available horn for professional audio. The 22" (575mm) wide mouth loads an attached driver to 300Hz, and the 1.4" throat stabilizes a 80° x 60° polar pattern to the upper limit of human hearing. Made of durable and non-resonant polyurethane, the ME464 can stand up to road use as well as shine in high output arrays in fixed installation. Reduced inter-box interaction and off axis energy from the tight pattern brings immediate benefits to sound quality and clarity, and the ME464 is the only horn which can support the full frequency response of our DCX464 coaxial driver. The ME464 can be easily applied to the [DCX464](#) using the [FB468](#) crossover, which is available in 8 or 16 Ohm configurations.

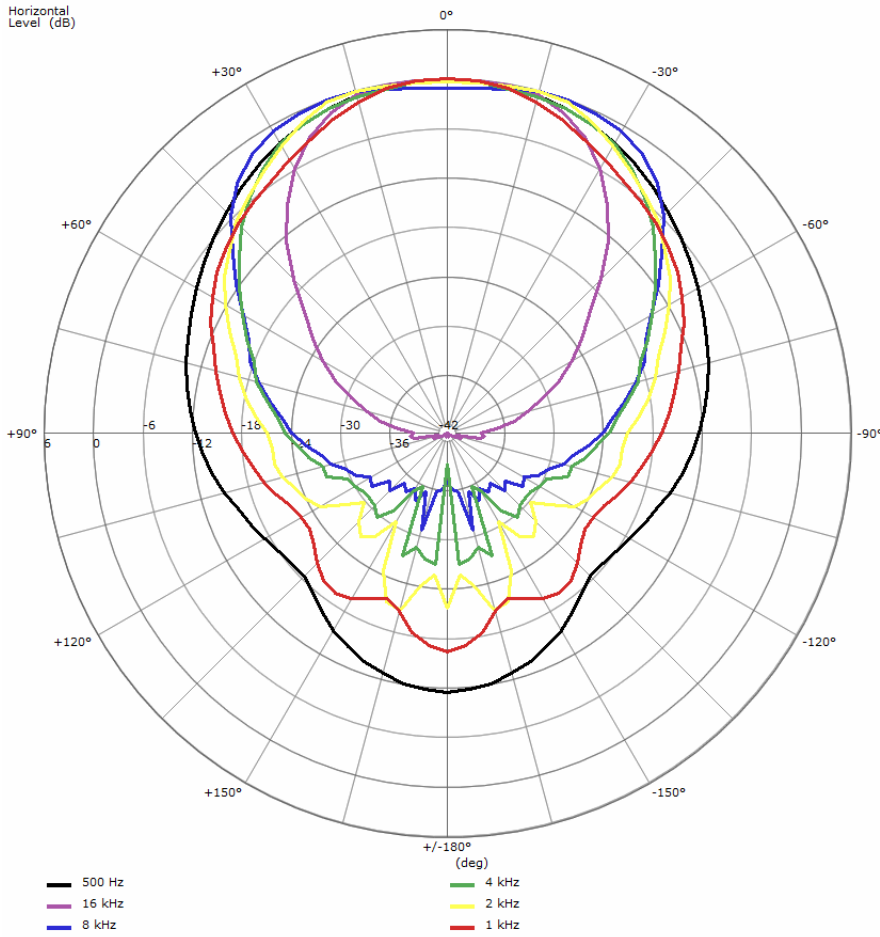


# ME464

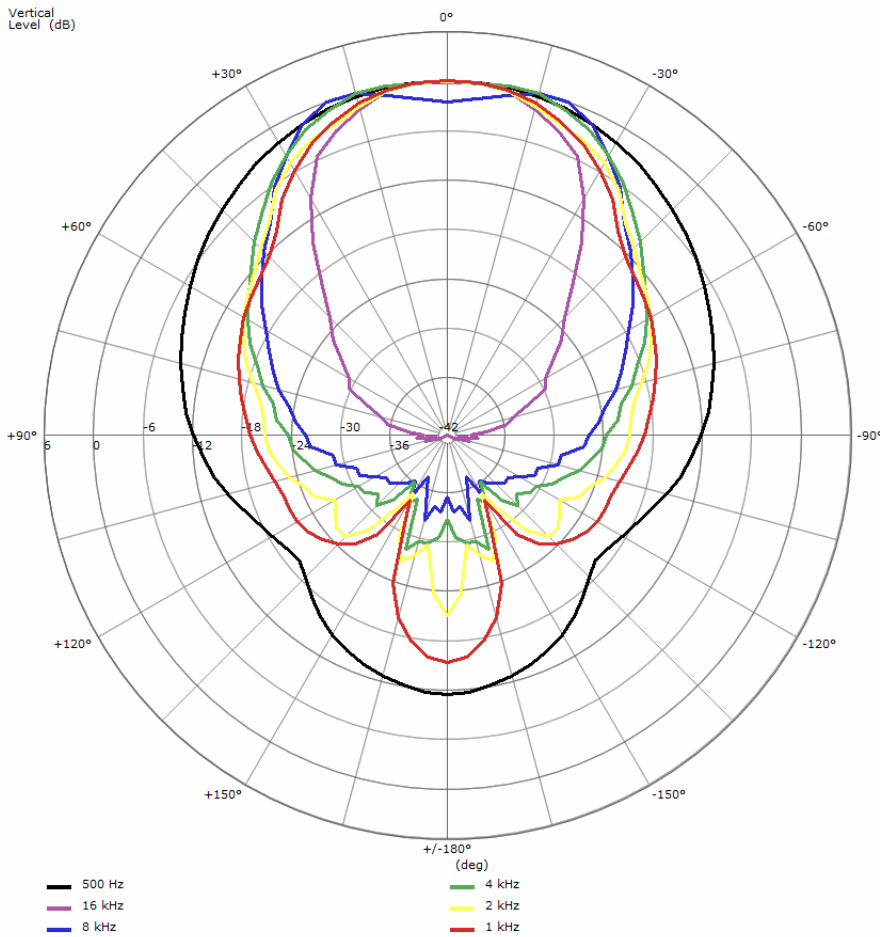


**ME464**

Horizontal Level (dB)



Vertical Level (dB)



**ME464**

