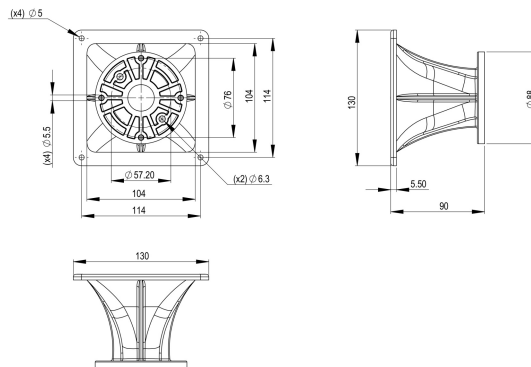


ME10v2

0Ω

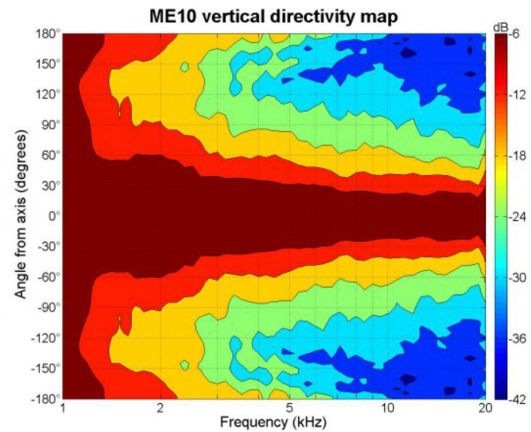
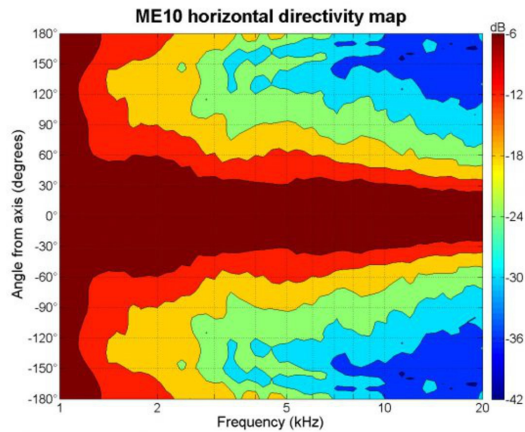
Horns - 1.0 Inches

- 1" throat entry
- 90° x 60° nominal coverage
- Hyperbolic Cosine Flare
- Excellent loading down to 1.5 kHz



ME10v2

Horns- 1.0 Inches



SPECIFICATIONS¹

Throat Diameter	25 mm (1.0 in)
Nominal Coverage Horizontal	90 °
Nominal Coverage Vertical	60 °
Cutoff Frequency	1.5 kHz
Material	ABS
Design	Hyperbolic Cosine Flare
Dimensions	130.5x130.5x90 mm (5.1x5.1x3.5 in)

MOUNTING AND SHIPPING INFO

Baffle Cutout Dimension	104x104 mm (4.1x4.1 in)
Air Volume Occupied by Driver	0.15 dm ³ (0.01 ft ³)
Net Weight	0.15 kg (0.33 lb)
Shipping Units	20
Shipping Weight	6.0 kg (13.2 lb)
Shipping Box	540x350x390 mm (21.2x13.8x15.3 in)
Other Details	4x 5.5 mm (0.22 in) holes 90° on 76 mm (3 in) diameter -- 2x 6.3 mm (0.25 in) holes 180° on 57.2 mm (2.26 in) diameter

1. Horn mounted on B&C DE 10 compression driver.