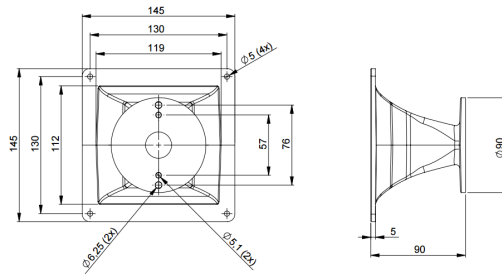


ME20

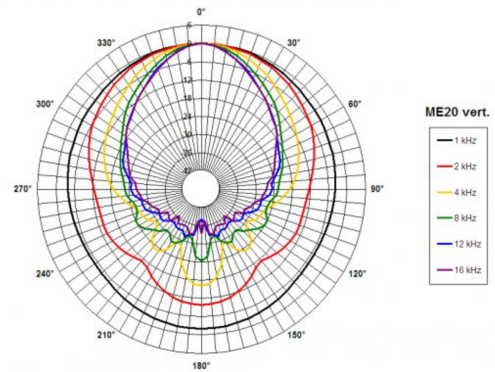
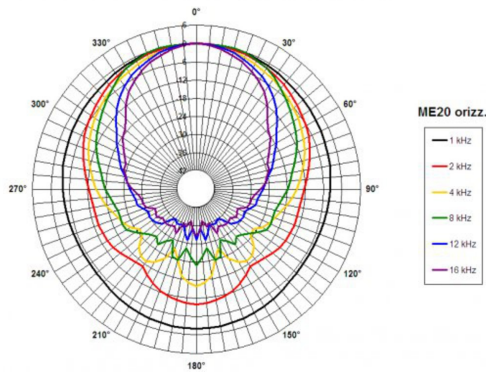
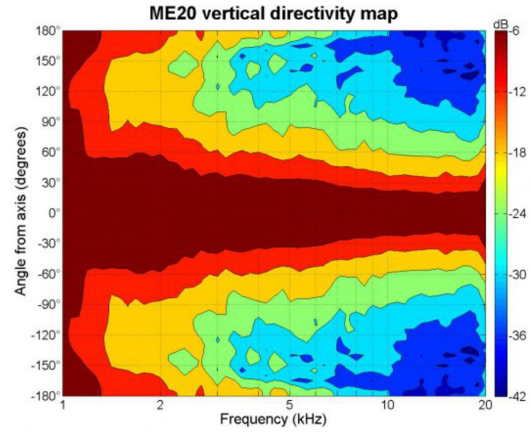
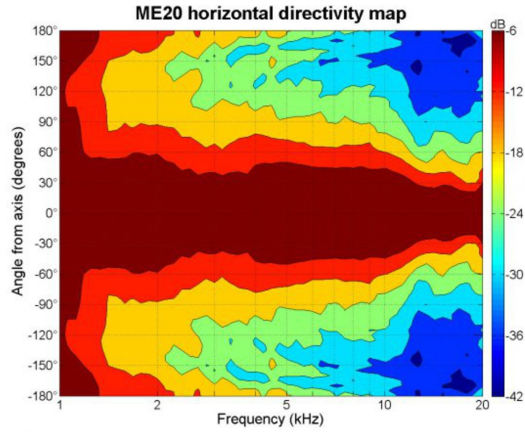
0Ω

Horns - 1.0 Inches

- 1" throat entry
- 90° x 60° nominal coverage
- Exponential flare
- Excellent loading down to 1.5 kHz

ME20

Horns- 1.0 Inches



SPECIFICATIONS¹

| | |
|-----------------------------|--------------------------------|
| Throat Diameter | 25 mm (1.0 in) |
| Nominal Coverage Horizontal | 90 ° |
| Nominal Coverage Vertical | 60 ° |
| Cutoff Frequency | 1.5 kHz |
| Material | Cast Aluminium |
| Dimensions | 145x145x90 mm (5.7x5.7x3.6 in) |

MOUNTING AND SHIPPING INFO

| | |
|-----------------------------|--|
| Baffle Cutout Dimension | 118x113 mm (4.6x4.4 in) |
| Air Volume Occupied by Horn | 0.1 dm ³ (0.0 ft ³) |
| Net Weight | 0.45 kg (0.99 lb) |
| Shipping Units | 20 |
| Shipping Weight | 12.0 kg (26.4 lb) |
| Shipping Box | 540x350x390 mm (21.2x13.8x15.3 in) |

Other Details
 2x 6.3 mm (0.25 in) holes 180° on 76 mm (3 in) diameter --- 2x 5.1 mm (0.2 in) holes 180° on 57 mm (2.24 in) diameter

- Horn mounted on B&C DE 500 compression driver.