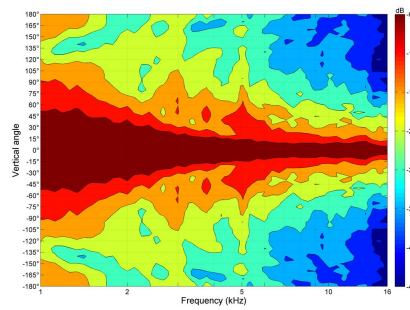
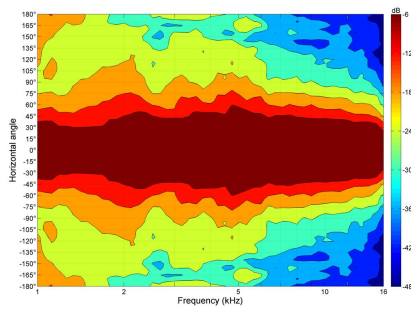


- 1.4" throat entry
- Line Array optimized Waveguide
- 120° max horizontal coverage
- Vertical coverage depends on configuration
- Very good loading down to 800 Hz



## SPECIFICATIONS

Horn mounted on B&C DE 750 compression driver.

|                             |                                       |
|-----------------------------|---------------------------------------|
| Throat Diameter             | 36 mm (1.4 in)                        |
| Nominal Coverage Horizontal | 120 °                                 |
| Cutoff Frequency            | 0.8 kHz                               |
| Material                    | Cast Aluminium                        |
| Design                      | Line Array Optimized Waveguide        |
| Dimensions                  | 163x130x180 mm<br>(6.42x5.12x7.09 in) |

## MOUNTING AND SHIPPING INFO

|                               |  |
|-------------------------------|--|
| Other details                 | Four 6.5 mm holes at 90° on 102 mm (4 in) diameter |
| Baffle Cutout Dimension       | 153 mm (6 in)                                      |
| Air Volume Occupied by Driver | 0.34 dm <sup>3</sup> (0.01 ft <sup>3</sup> )       |
| Net Weight                    | 0.94 kg (2.08 lb)                                  |
| Shipping Units                | 1 pcs  |
| Shipping Weight               | 1.04 kg (2.3 lb)                                   |
| Shipping Box                  | 190x135x165 mm<br>(7.48x5.31x6.50 in)              |