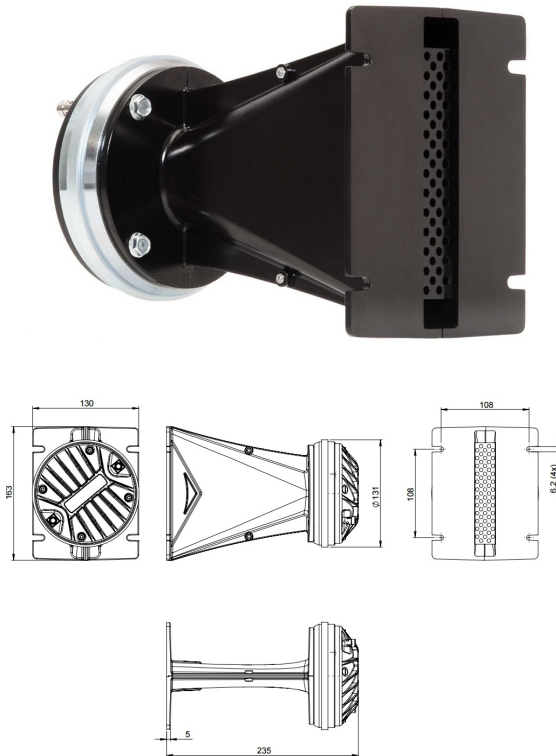


# WGX980TN

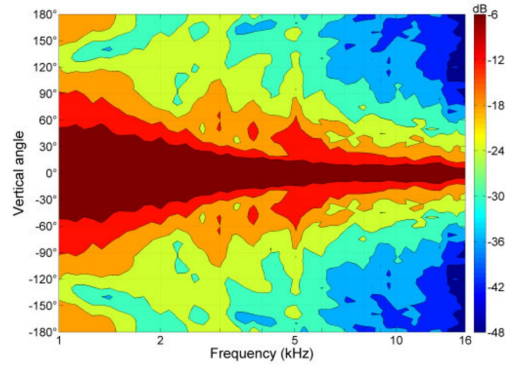
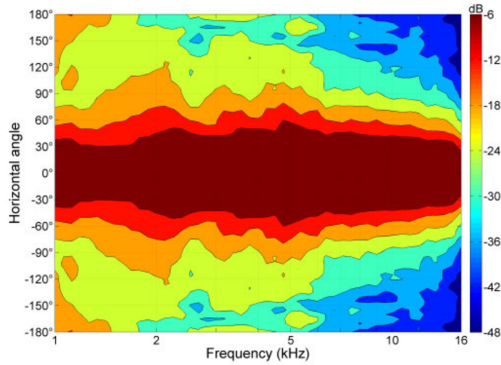
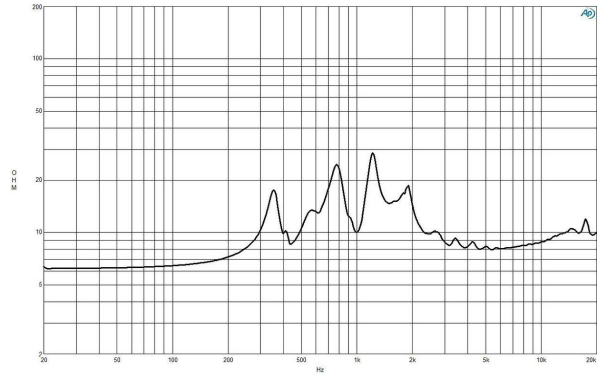
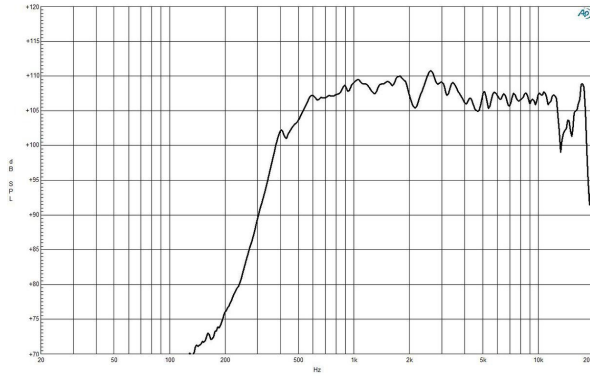
**8Ω****Line Array Sources - 1.4 Inches**

- Line Array optimized Waveguide with DE980TN driver
- 120° max horizontal coverage
- 220 W continuous program power capacity
- 75 mm (3 in) CCAW voice coil
- Titanium diaphragm
- 500 - 18000 Hz response
- 108.5 dB sensitivity
- Neodymium magnet assembly with shorting copper cap

Wave guide horn not sold separately

# WGX980TN

Line Array Sources- 1.4 Inches



## SPECIFICATIONS

|  |                |
|--|----------------|
| Horizontal Coverage                    | 120 ° Max      |
| Active Radiating Factor                | 93.7 %         |
| Recommended Crossover <sup>1</sup>     | 0.8 kHz        |
| Waveguide Material                     | Cast Aluminium |
| Nominal Impedance                      | 8 Ω            |
| Minimum Impedance                      | 8.0 Ω          |
| Nominal Power Handling <sup>2</sup>    | 110 W          |
| Continuous Power Handling <sup>3</sup> | 220 W          |
| Sensitivity <sup>4</sup>               | 108.5 dB       |
| Frequency Range <sup>5</sup>           | 1.0 - 18.0 kHz |
| Voice Coil Diameter                    | 75 mm (3.0 in) |
| Winding Material                       | CCAW           |
| Diaphragm Material                     | Titanium       |
| Flux Density                           | 2.05 T         |
| Magnet Material                        | Neodymium Ring |

## MOUNTING AND SHIPPING INFO

|                 |                                 |
|-----------------|---------------------------------|
| Exit Size       | 153x25 mm (6x1 in)              |
| Driver Diameter | 131 mm (5.16 in)                |
| Dimensions      | 163x130x235 mm (6.4x5.1x9.3 in) |
| Net Weight      | 3.3 kg (7.28 lb)                |
| Shipping Units  | 1                               |
| Shipping Weight | 3.4 kg (7.5 lb)                 |
| Shipping Box    | 245x140x175 mm (9.6x5.5x6.9 in) |

1. 12 dB/oct. Or higher slope high-pass filter.
2. 2 hour test made with continuous pink noise signal (6 dB crest factor) within the range from the recommended crossover frequency to 20 kHz. Power calculated on rated minimum impedance.
3. Power on Continuous Program is defined as 3 dB greater than the Nominal rating.
4. Applied RMS Voltage is set to 2.83 V for 8 ohms Nominal Impedance.
5. Waveguide mounted on 90°x10° bell horn

B&C Speakers s.p.a.

Via Poggiomoro, 1 - Loc. Vallina, 50012 Bagno a Ripoli (FI) - ITALY - Tel. +39 055 65721 - Fax +39 055 6572312 - mail@bcspeakers.com