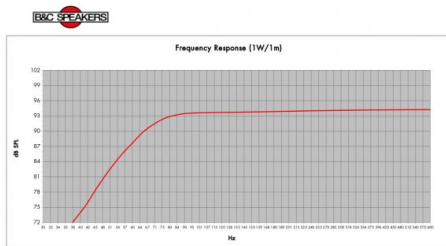
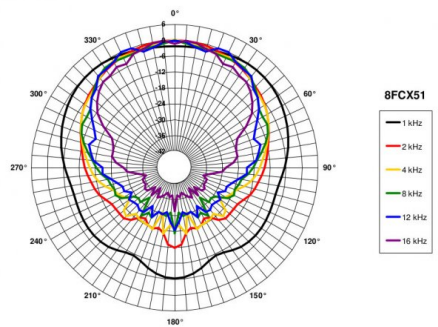
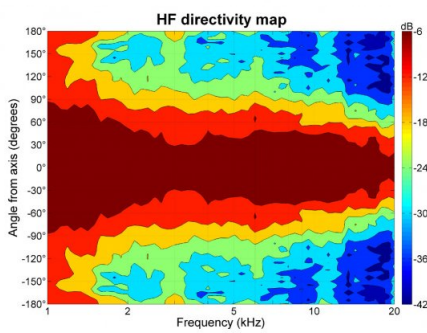
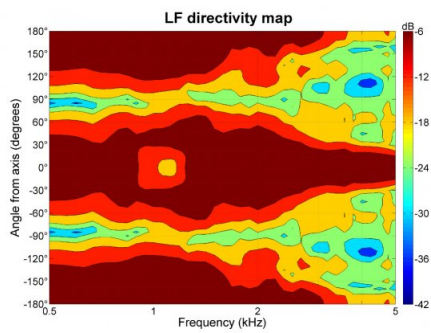
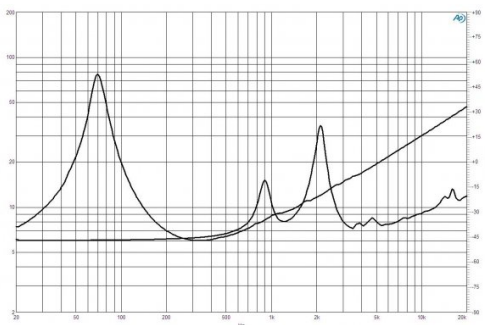
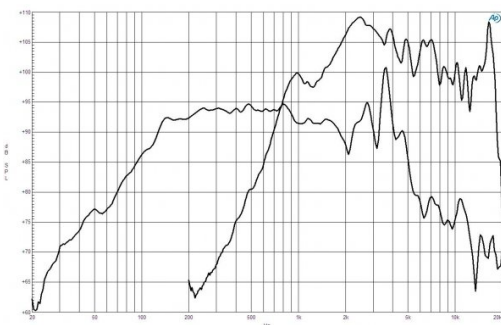




- 500 W continuous program power capacity
- 100° nominal coverage
- 70 - 18000 Hz response
- 96 dB sensitivity
- 20.1 mm (0.79") HF unit exit diameter



Model:	8FCX51	Configuration:	One Drive
Excuse Type:	Base Reflex	Q:	7
Rated Max Volume (20Hz):	115	Reflex Area (cm²):	45.6
Spring Frequency (Hz):	70	Port Length (cm):	12.0
Frequency (2.285) (Hz):	70.1		

**GENERAL**

Nominal Diameter	210 mm (8 in)
Nominal Impedance	8 Ω
Frequency Range	70 Hz - 18000 Hz
Dispersion Angle	100 ° Included by -6 dB down points.

**DESIGN**

Magnet Material	Ferrite
Woofer Cone Treatment	WP Waterproof Front Side

**SERVICE KITS**

HF replacement-diaphragm	MMD4008
LF recone-kits	RCK008FCX518

**SPECIFICATIONS LF UNIT**

Nominal Diameter	210 mm (8 in)
Nominal Impedance	8 Ω
Minimum Impedance	6 Ω
Nominal Power Handling	250 W 2 hours test made with continuous pink noise signal within the range Fs-10Fs. Power calculated on rated minimum impedance. Loudspeaker in free air.

Continuous Power Handling	500 W Power on Continuous Program is defined as 3 dB greater than the Nominal rating.
---------------------------	--

Sensitivity	96 dB Applied RMS Voltage is set to 2.83V.
-------------	---

Voice Coil Diameter	51 mm (2 in)
---------------------	--------------

Winding Material	Aluminium
------------------	-----------

Former Material	Glass Fibre
-----------------	-------------

Winding Depth	17.5 mm (0.69 in)
---------------	-------------------

Magnetic Gap Depth	8 mm (0.31 in)
--------------------	----------------

Flux Density	1 T
--------------	-----

Woofer Cone Treatment	WP Waterproof Front Side
-----------------------	--------------------------

**PARAMETERS**

Fs	69 Hz
Re	4.9 Ω
Qes	0.36
Qms	6.3
Qts	0.34
Vas	16 dm <sup>3</sup> (0.56 ft <sup>3</sup> )
Sd	220 cm <sup>2</sup> (34.1 in <sup>2</sup> )
η0	1.4 %
Xvar	6 mm
Mms	22 g
Bl	11.5 Tm
Le	0.9 mH
EBP	192 Hz

**SPECIFICATIONS HF UNIT**

Nominal Diameter	210 mm (8 in)
Nominal Impedance	8 Ω
Minimum Impedance	7 Ω
Nominal Power Handling	50 W 2 hour test made with continuous pink noise signal within the range from the recommended crossover frequency to 20 kHz. Power calculated on rated minimum impedance. Loudspeaker in free air.

Continuous Power Handling	100 W Power on Continuous Program is defined as 3 dB greater than the Nominal rating.
---------------------------	--

Sensitivity	104 dB Applied RMS Voltage is set to 2.83V.
-------------	--

Recommended Crossover	1.8 kHz 12 dB/oct. or higher slope high-pass filter.
-----------------------	---

Voice Coil Diameter	44 mm (1.7 in)
---------------------	----------------

Winding Material	Aluminium
------------------	-----------

Inductance	0.11 mH
------------	---------

Flux Density	1.8 T
--------------	-------

Diaphragm Material	Polyimide
--------------------	-----------

**MOUNTING AND SHIPPING INFO**

Overall Diameter	225 mm (8.8 in)
Bolt Circle Diameter	210 mm (8.3 in)
Baffle Cutout Diameter	187 mm (7.4 in)
Depth	118 mm (4.64 in)
Flange and Gasket Thickness	10 mm (0.37 in)
Net Weight	5 kg (11.02 lb)
Shipping Units	1 pcs
Shipping Weight	5.6 kg (12.35 lb)
Shipping Box	295x314x175 mm (11.61x12.36x6.89 in)